

Del 2 "Når Både Mødes"

Afsnit A

"Retten til vejen" – "Holde Klar"

Regel 10

Stb – Bb

Regel 11

Læ – Luv

Regel 12

Klar foran – Klar agter

Regel 13

Under stagvending

”Holde Klar”

Definition

En båd holder klar af en anden hvis:

- Den anden kan sejle sin kurs uden at undvige**
- Ved overlap, hvis læ kan ændre kurs uden omgående berøring**

Del 2 Afsnit B

“Generelle Begrænsninger”

(I “retten til vejen”)

Regel 14

Undgå kollision

“Give plads”

Regel 15

Opnå ”retten til vejen”

Regel 16

Ændre kurs

Regel 17

“Rigtig kurs”

”Plads”

Definition

Den plads en båd behøver

- Under de givne forhold til at**
- Manøvrere omgående på en**
- Sømandsmæssig forsvarlig
måde**

"Rigtig kurs"

Definition

Den kurs en båd ville sejle for at

- Fuldføre hurtigst muligt**
- Uden andre både i nærheden**

NB Ingen rigtig kurs før startsignalet

Ret til vejen

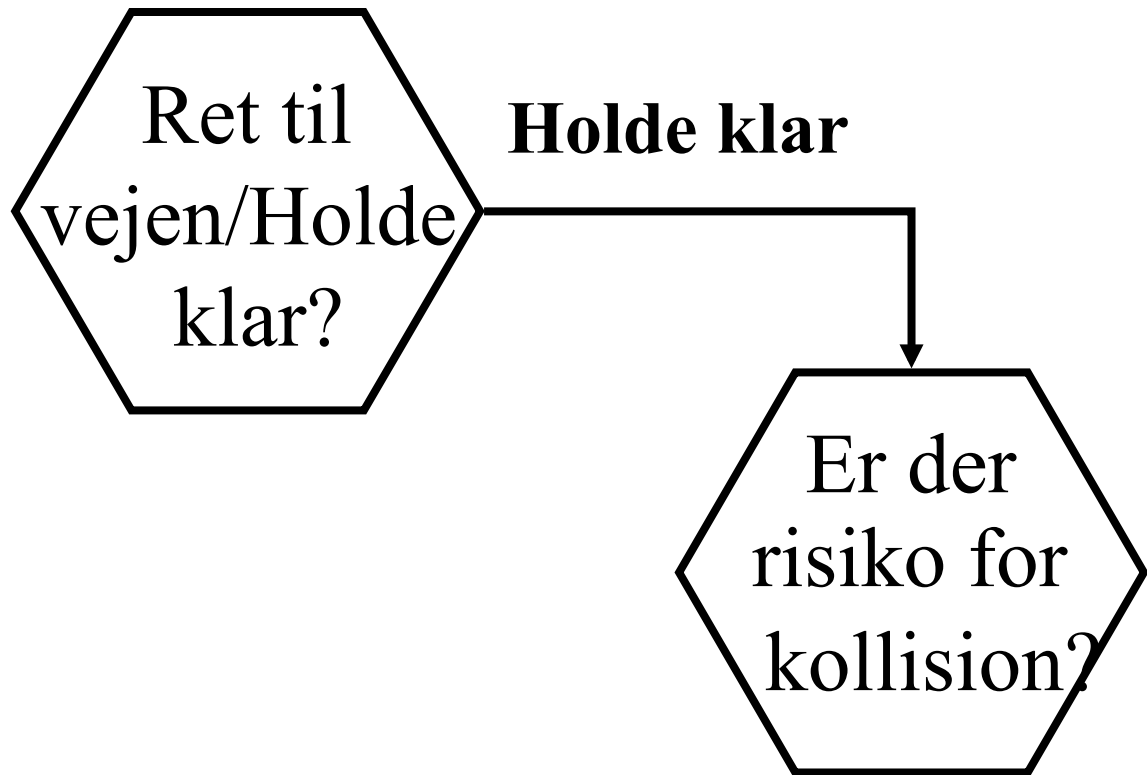


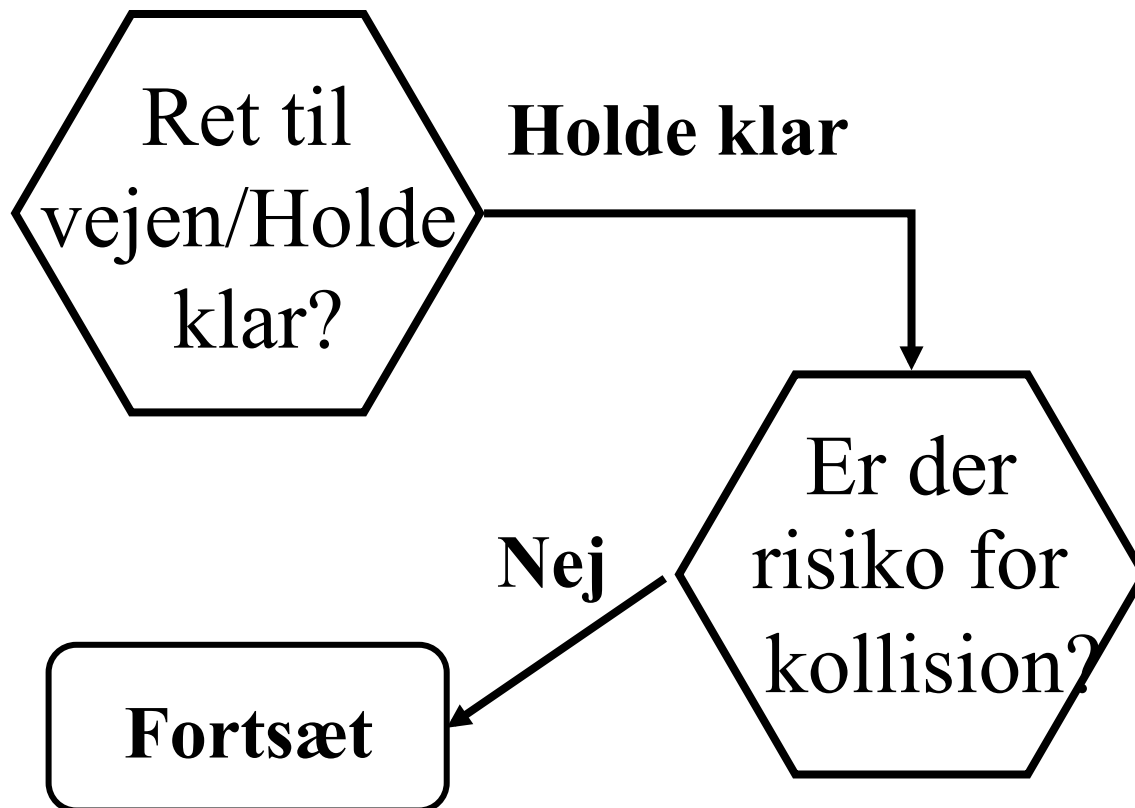
Holde klar

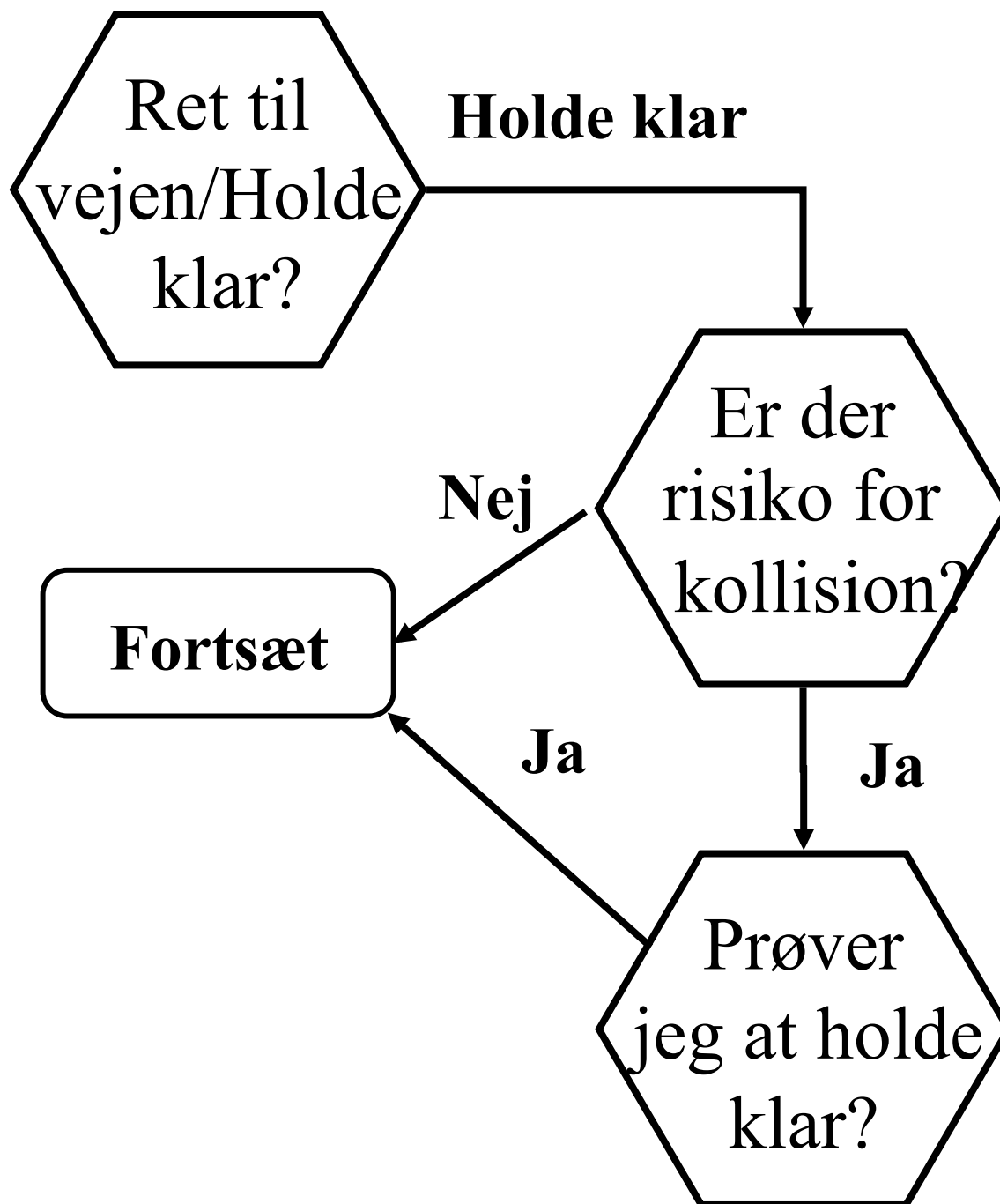
Ret til
vejen/Holde
klar?

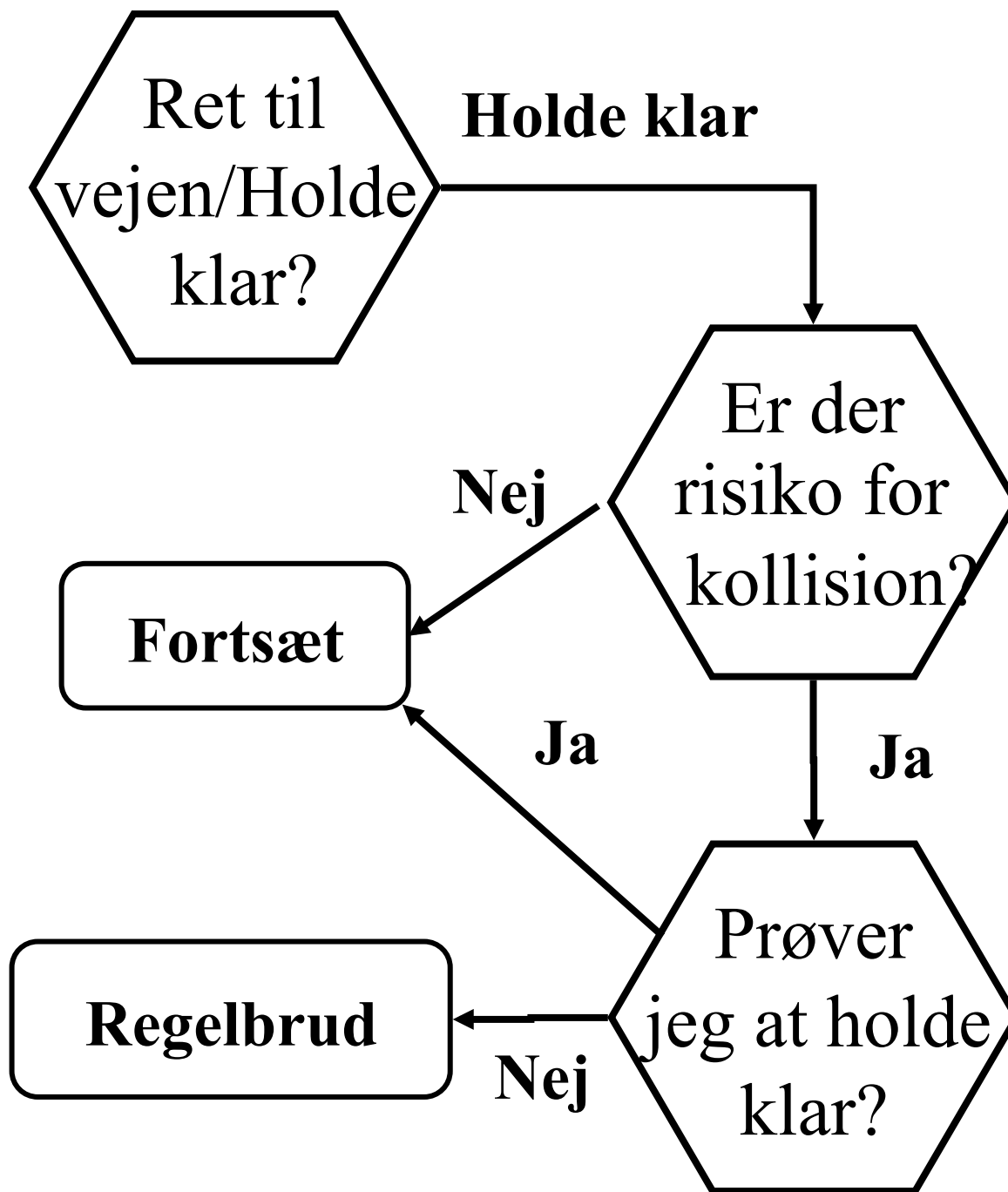
Holde klar

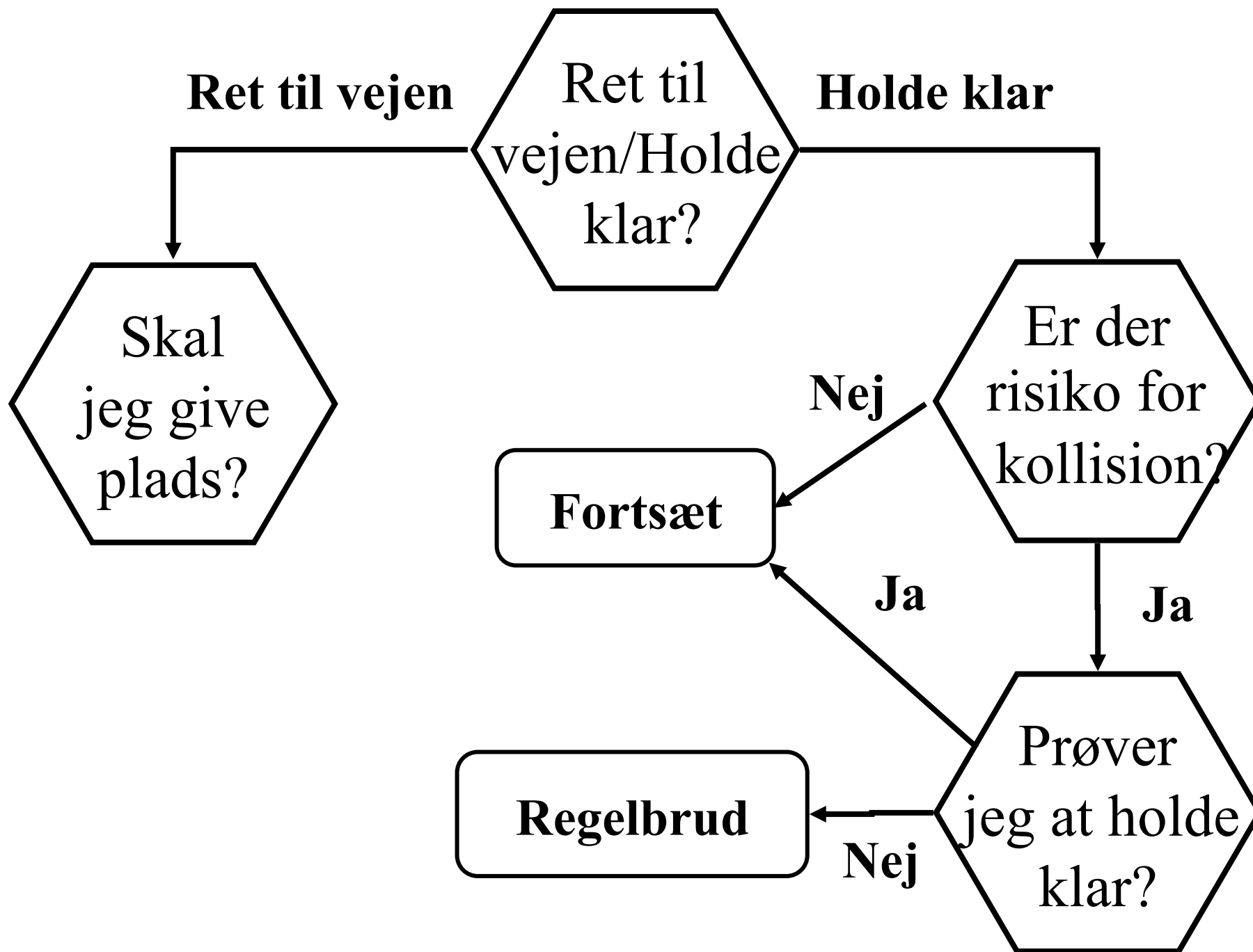
Er der
risiko for
kollision?

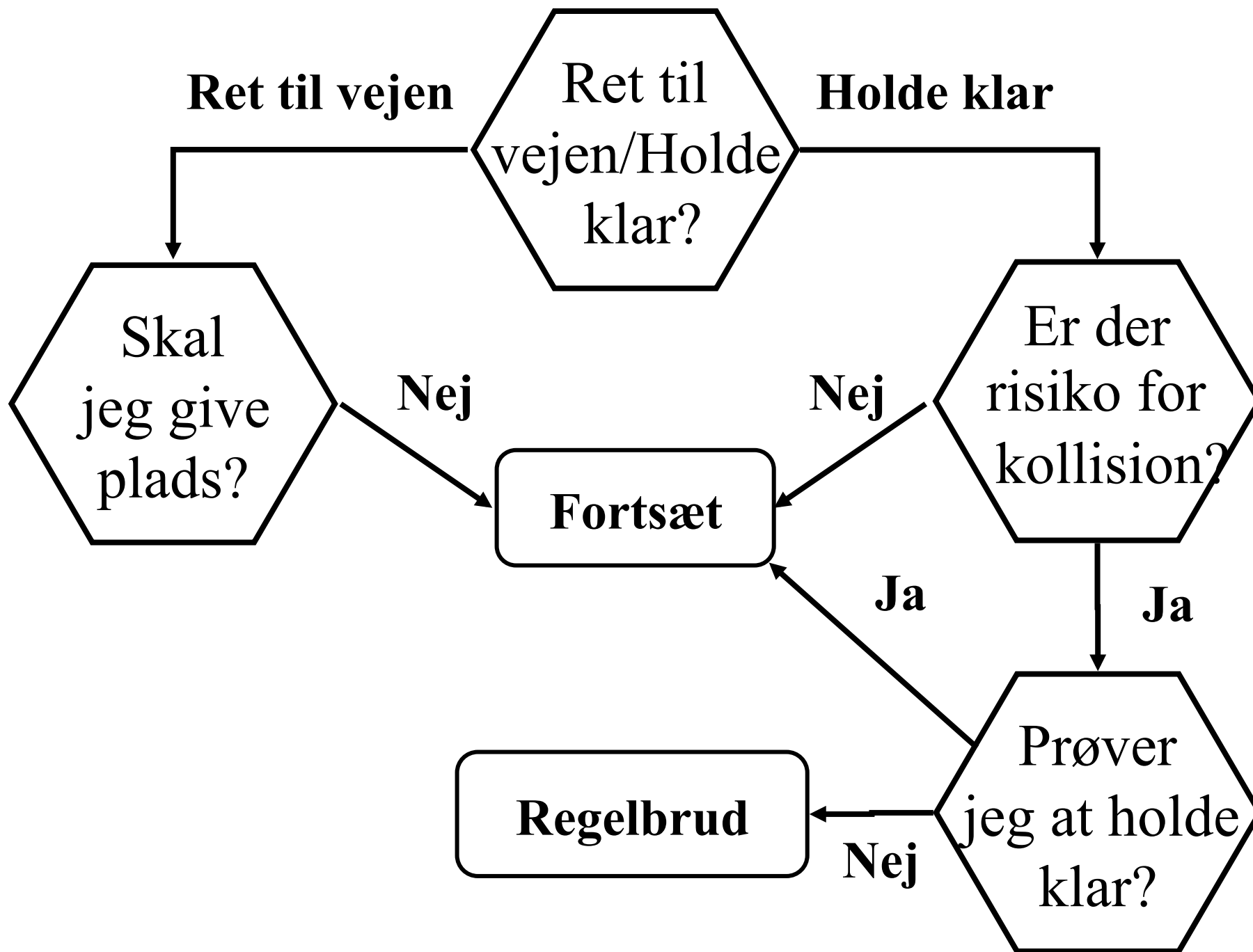


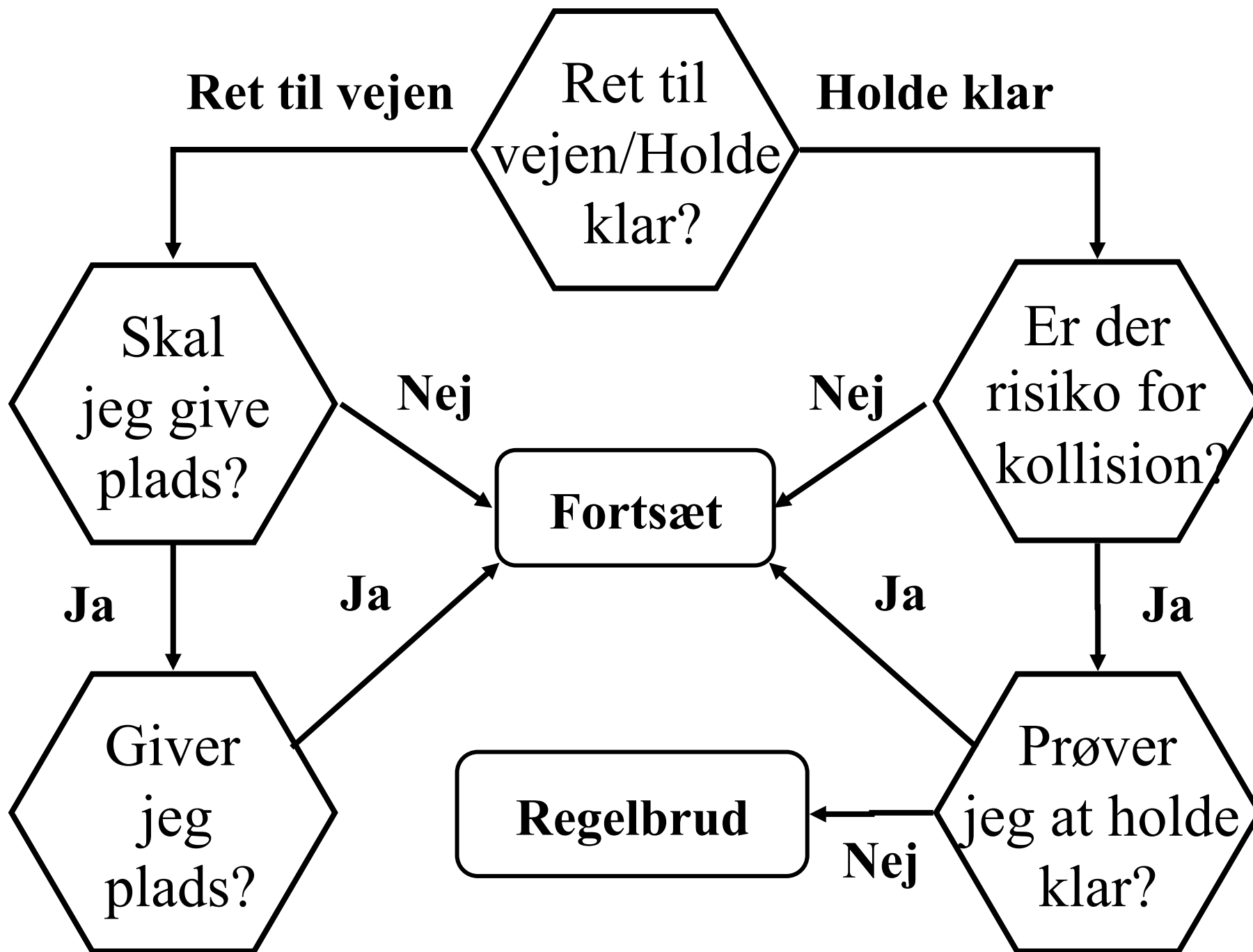


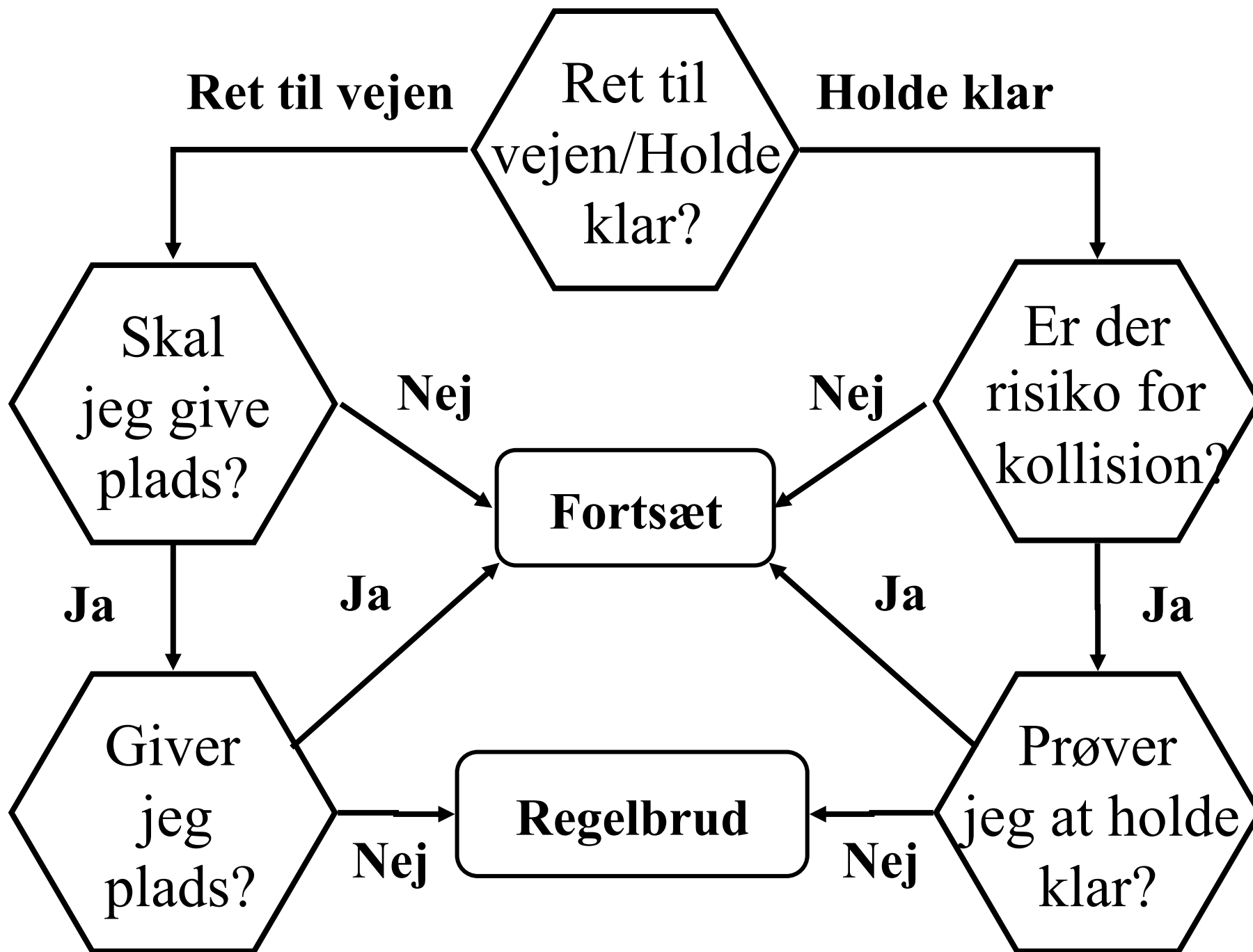


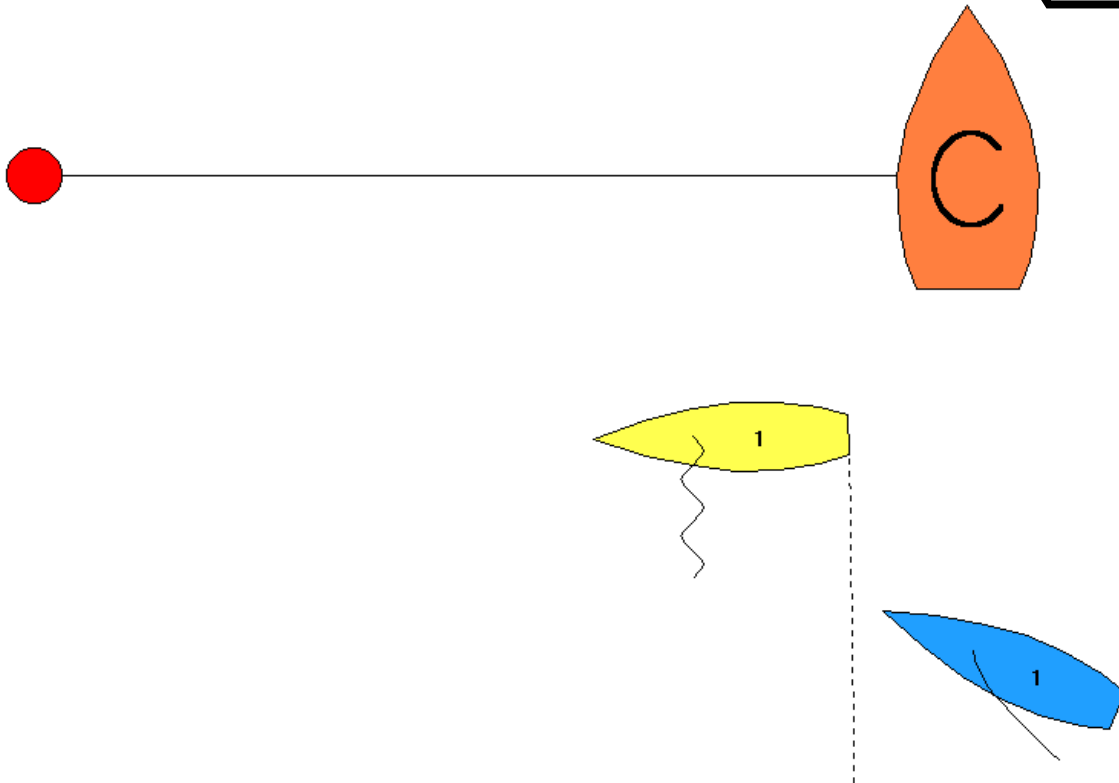
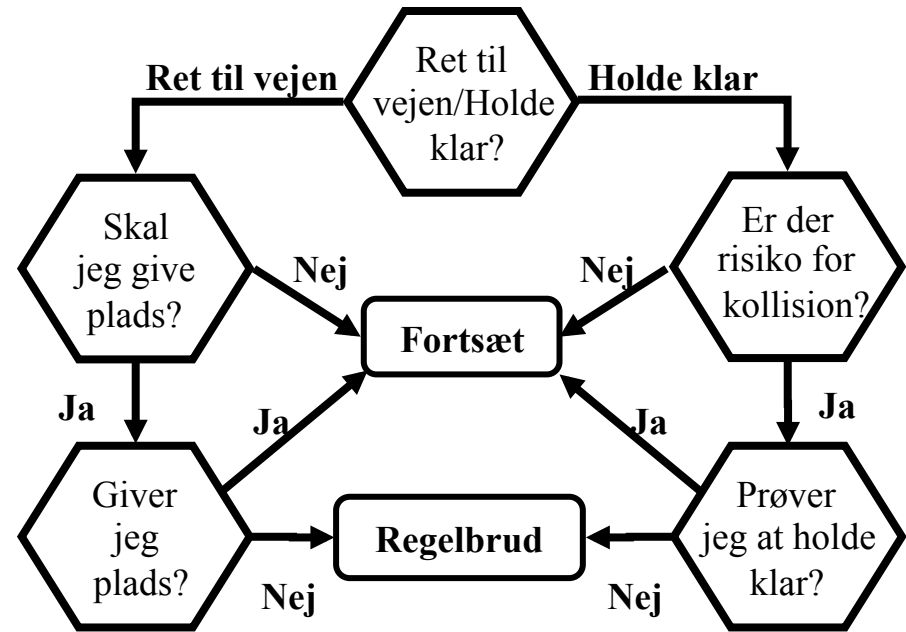


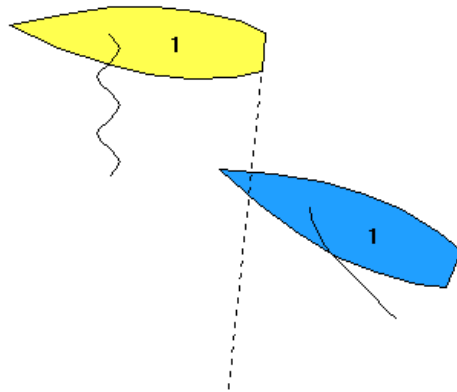
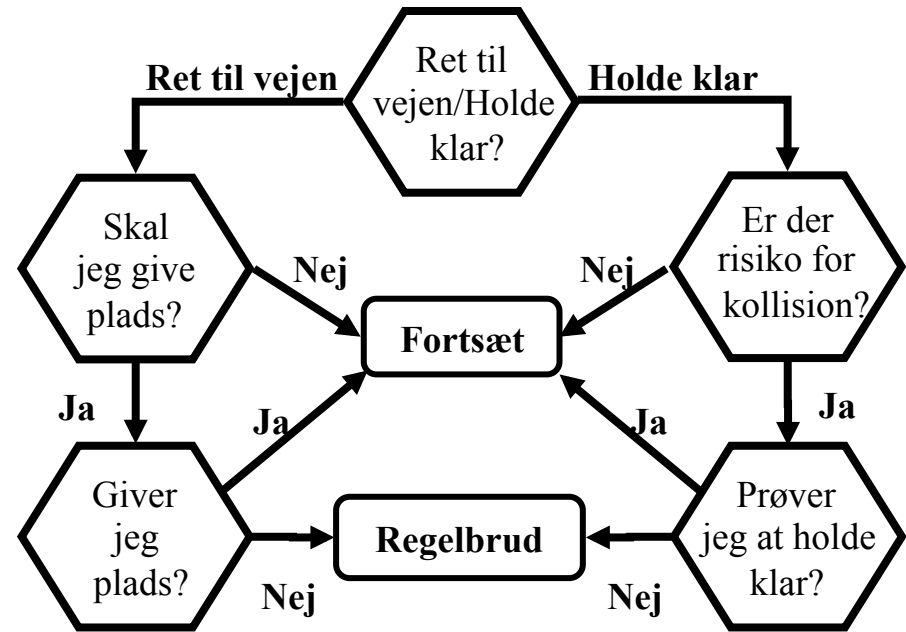


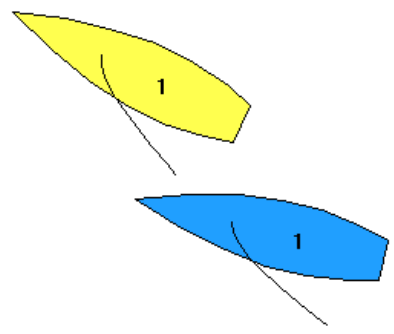
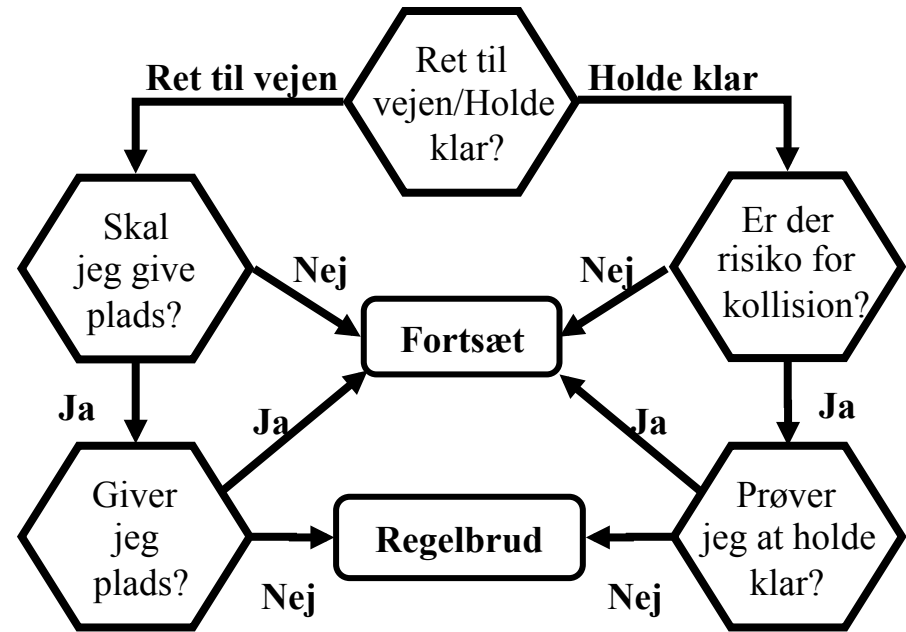


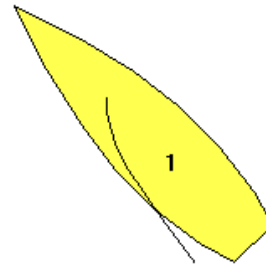
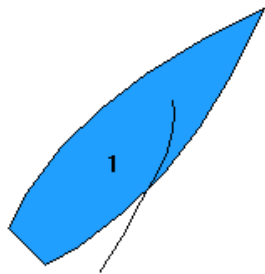
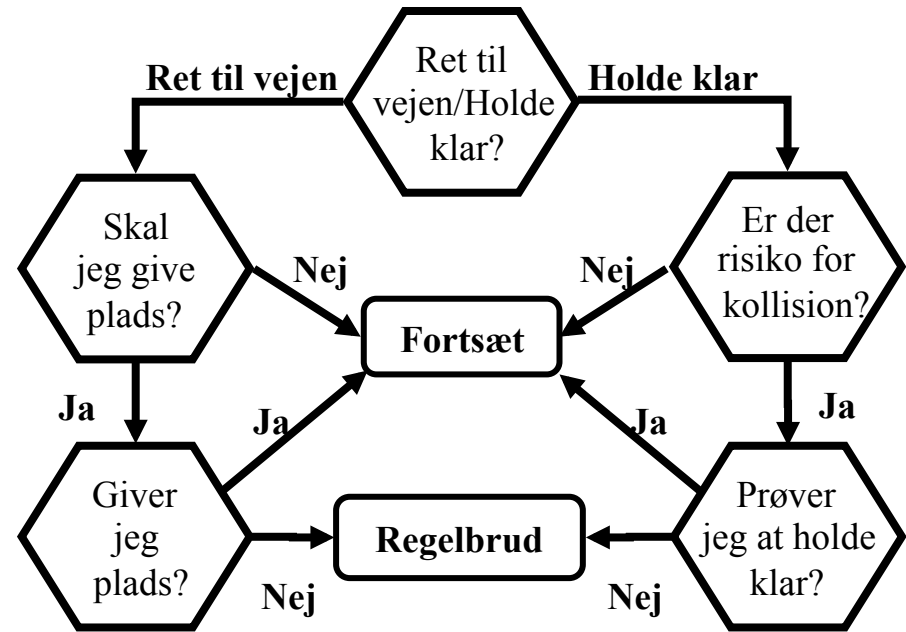


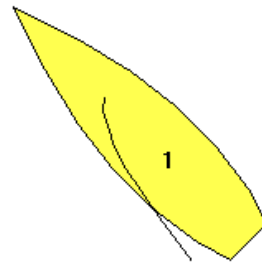
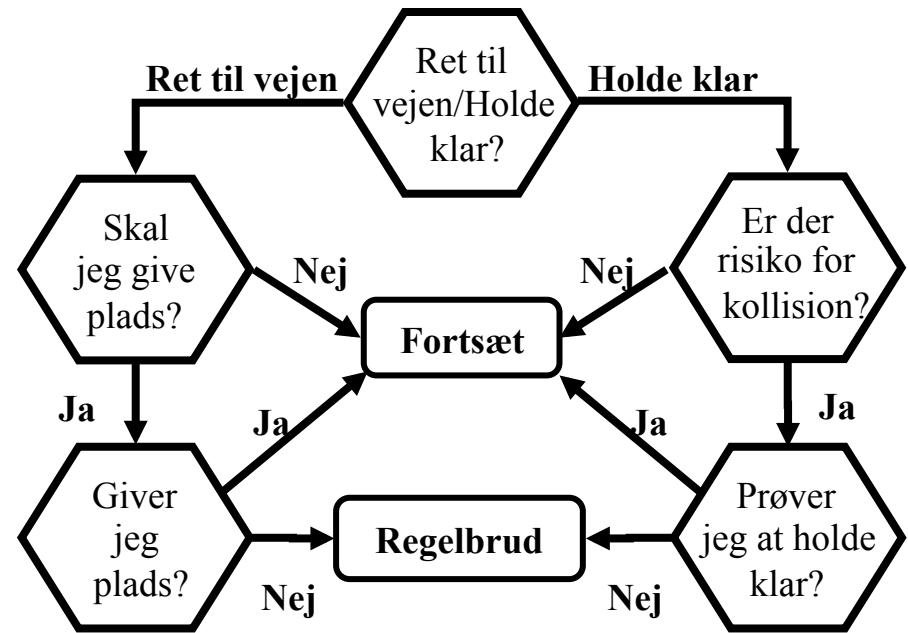


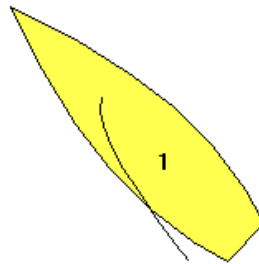
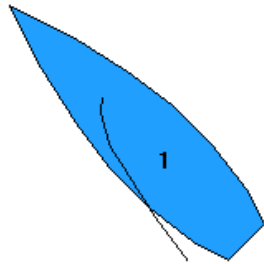
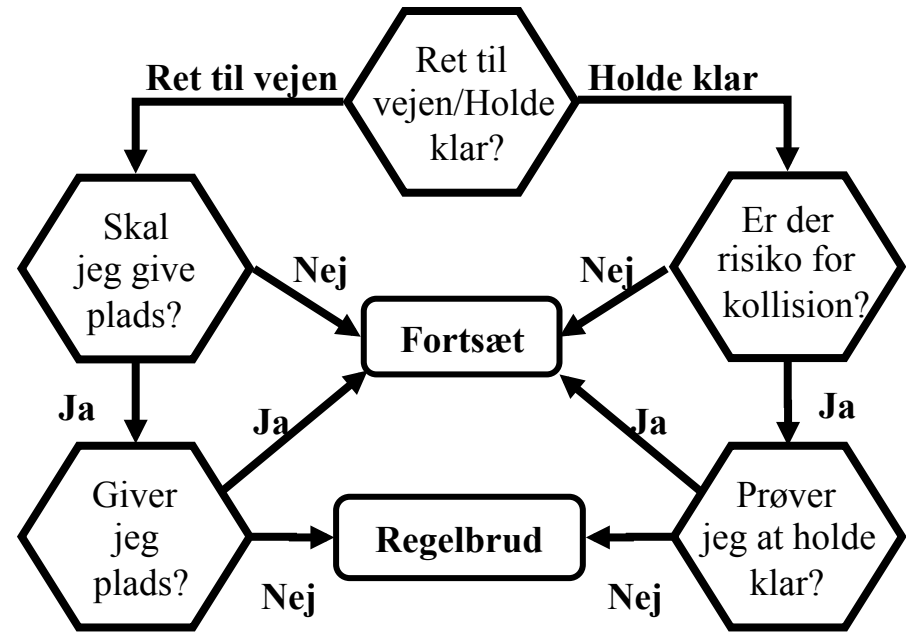


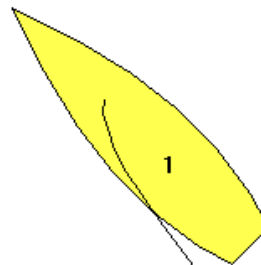
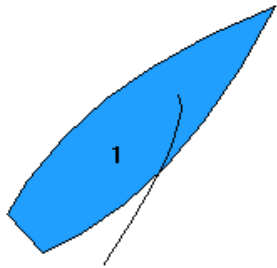
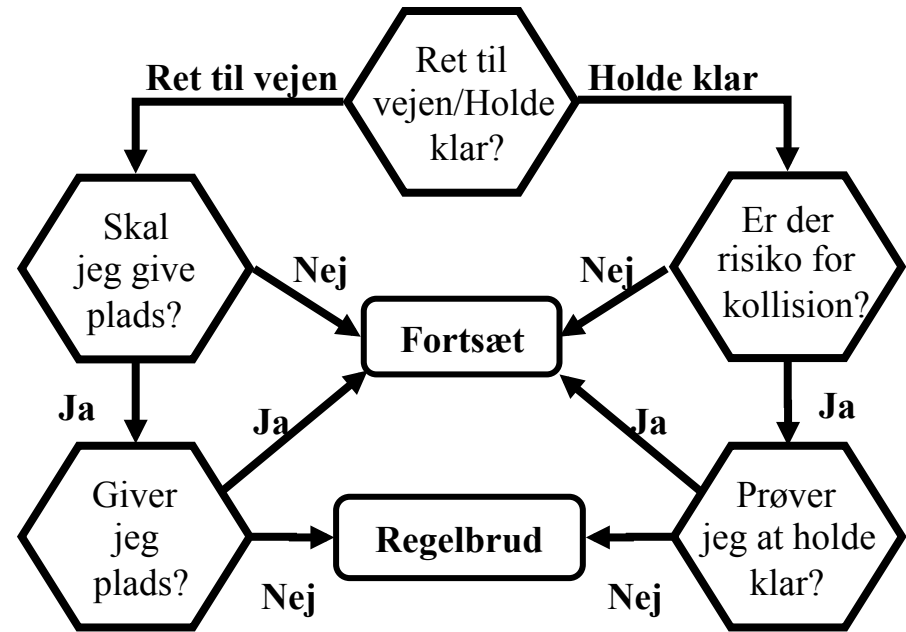


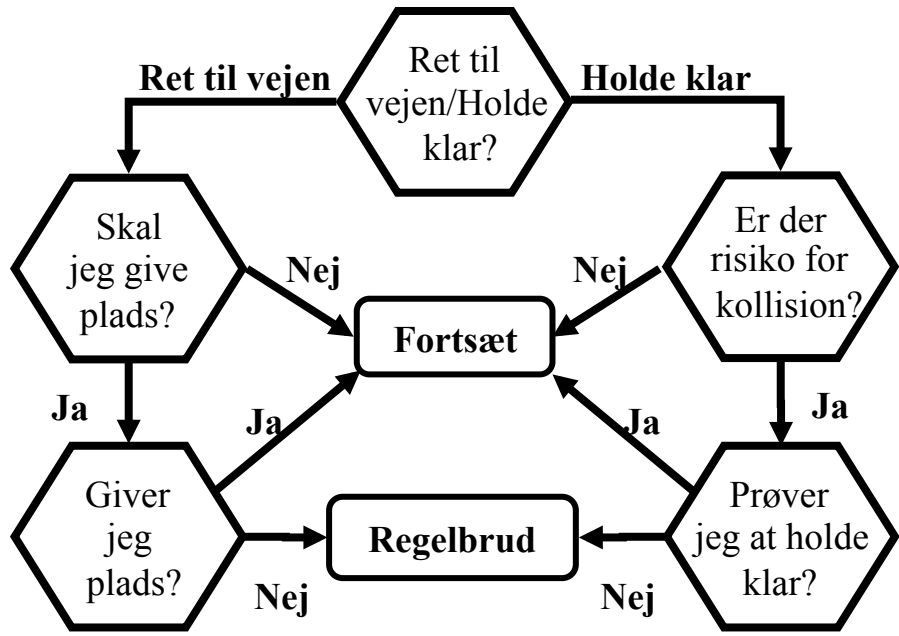
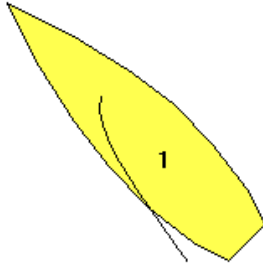
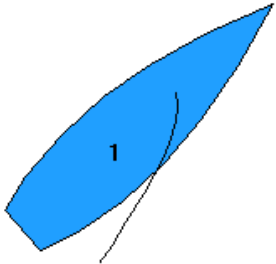


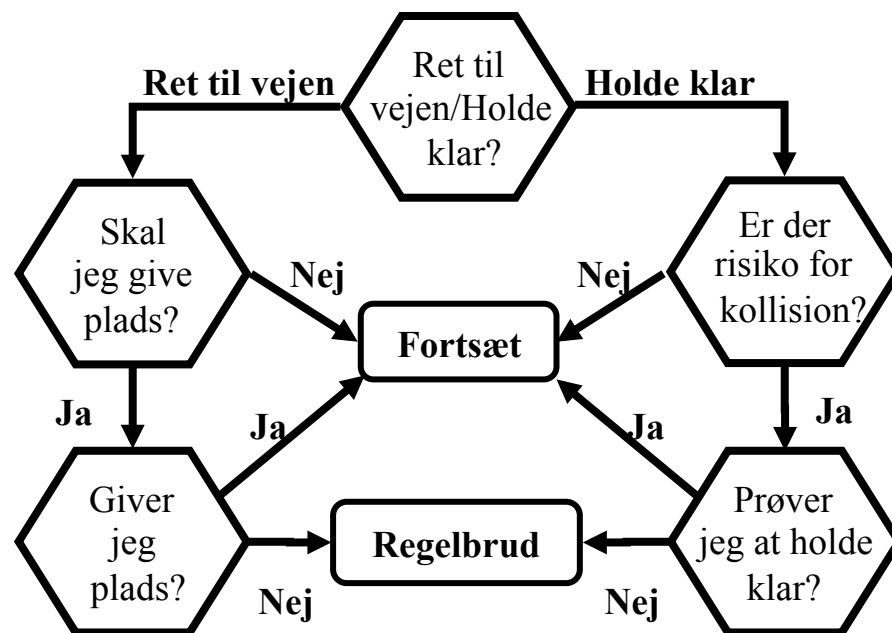
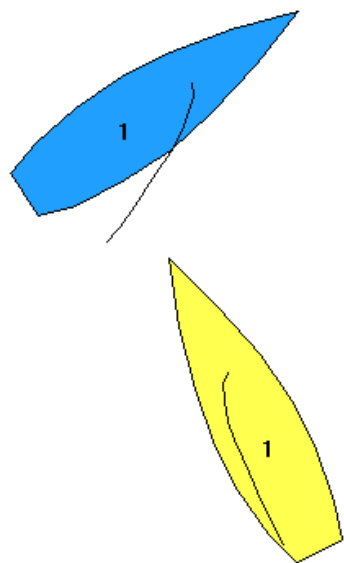


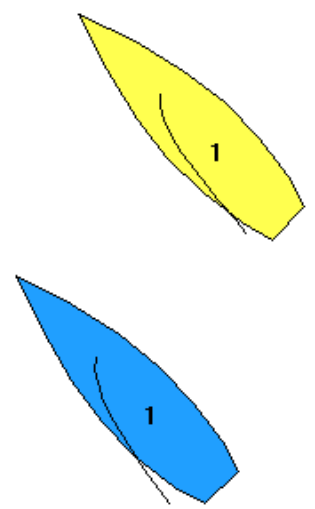
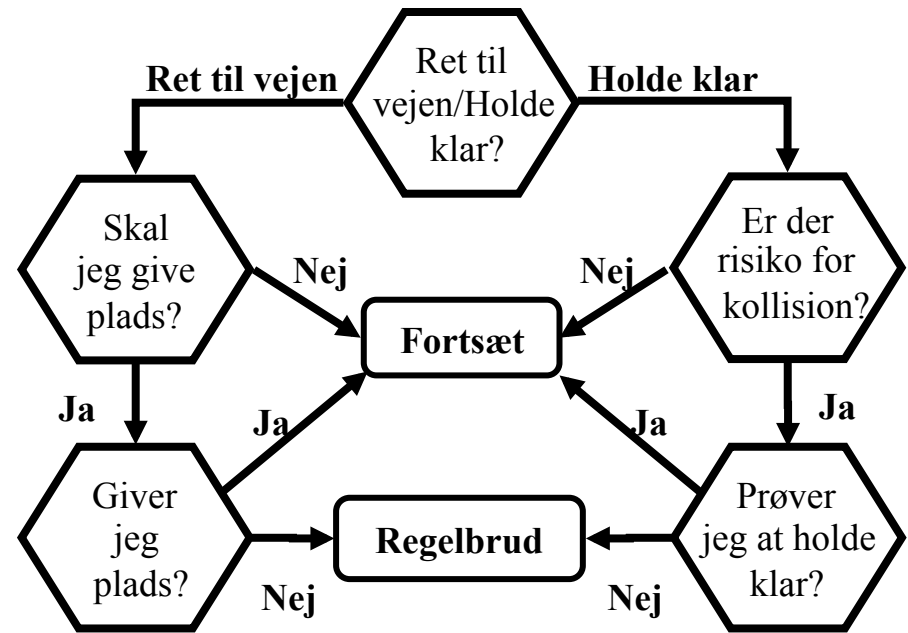


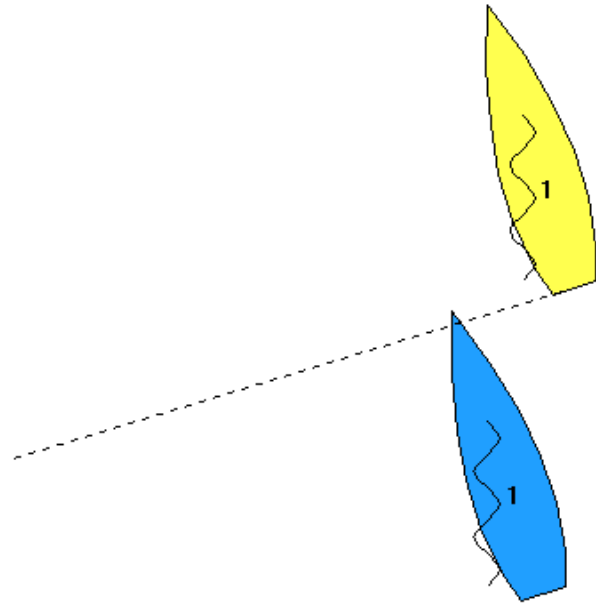
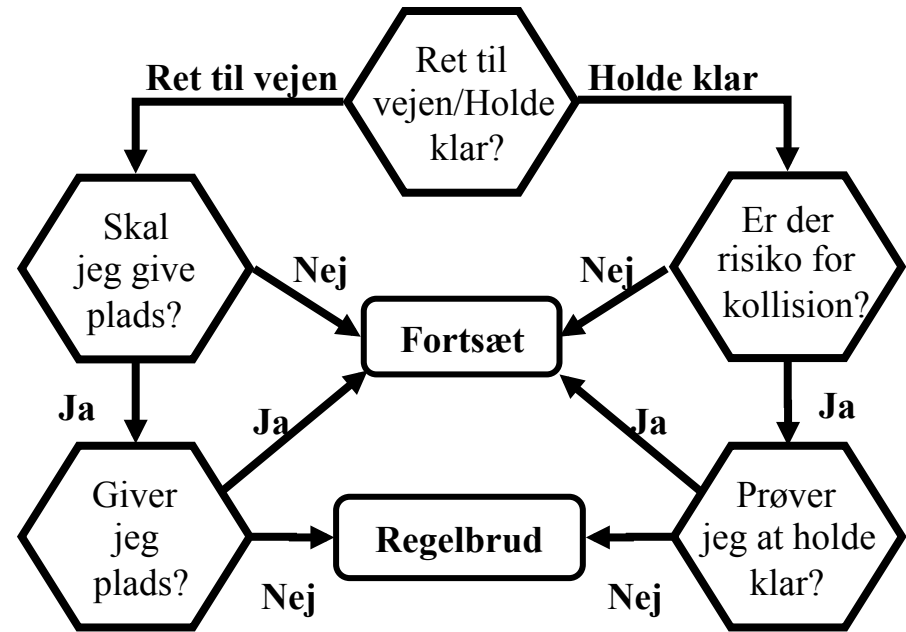


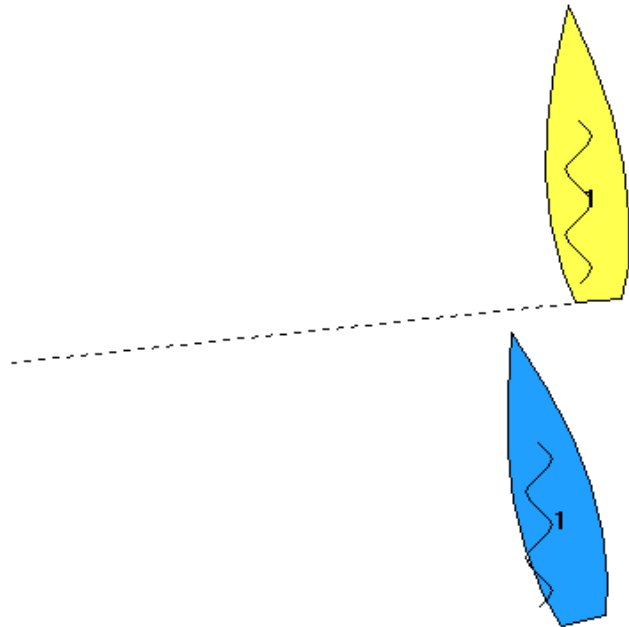
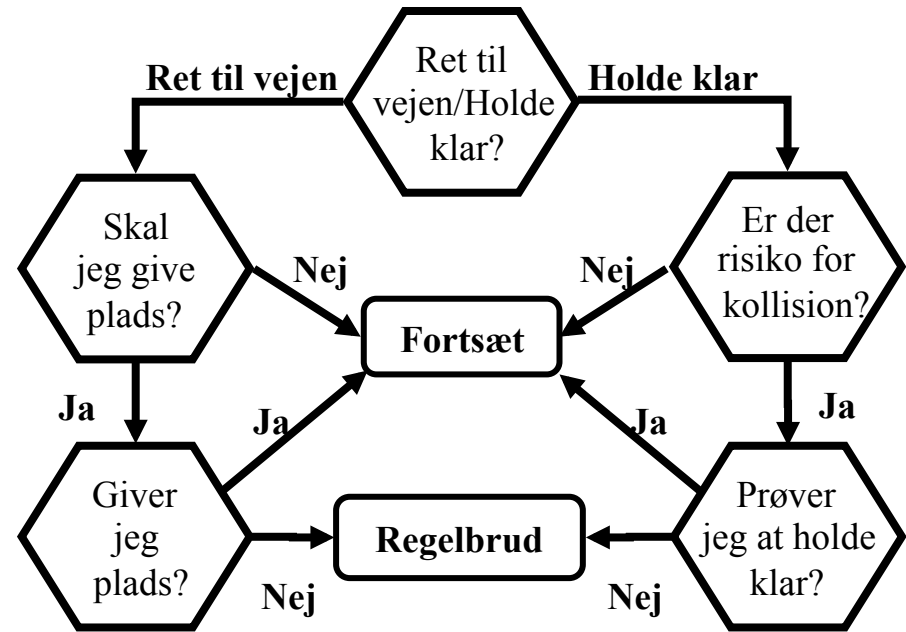


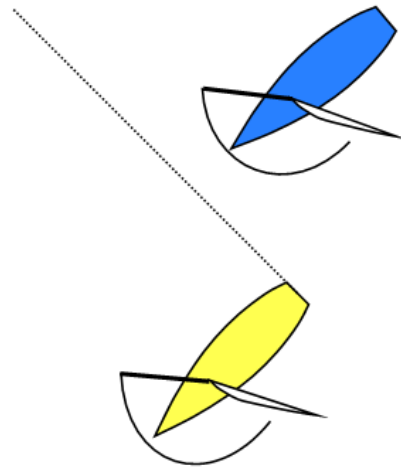
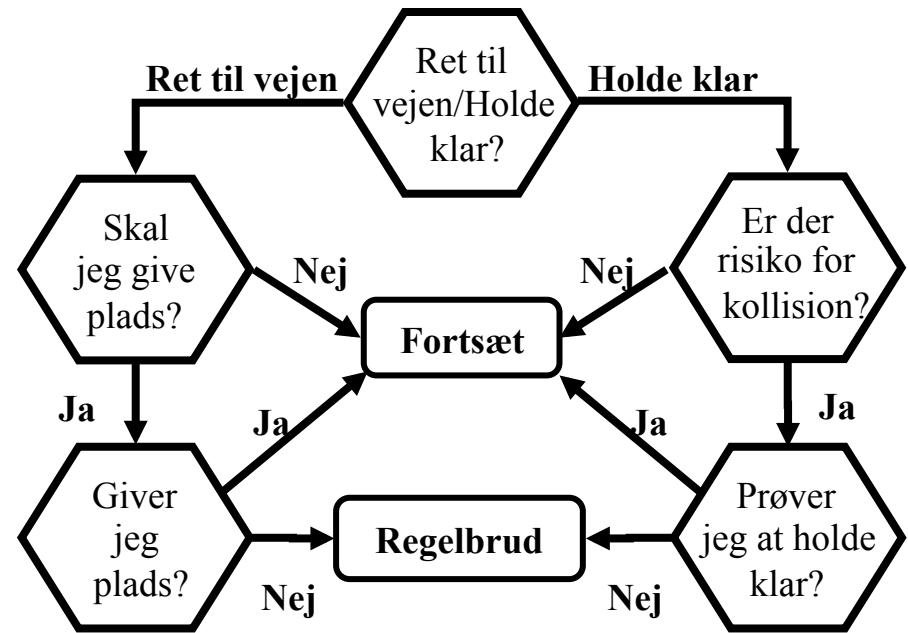


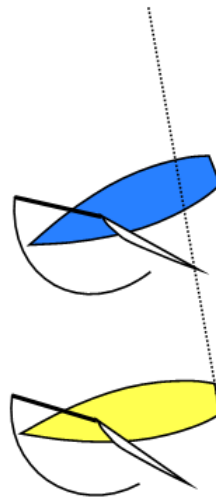
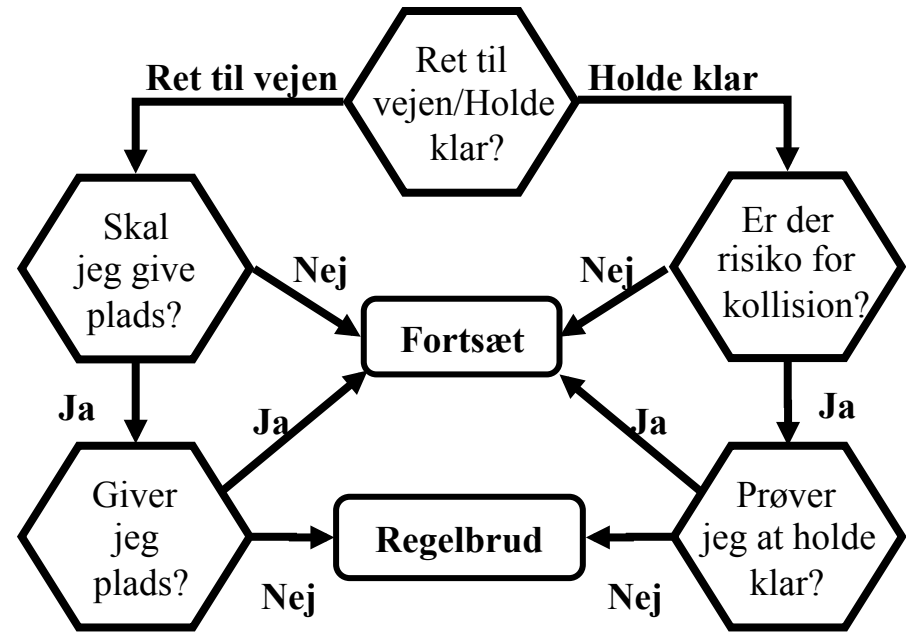


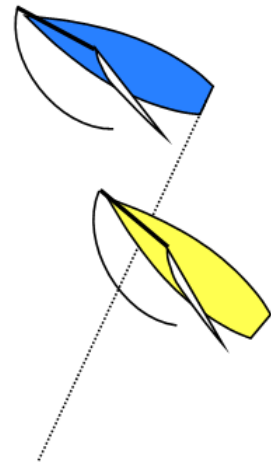
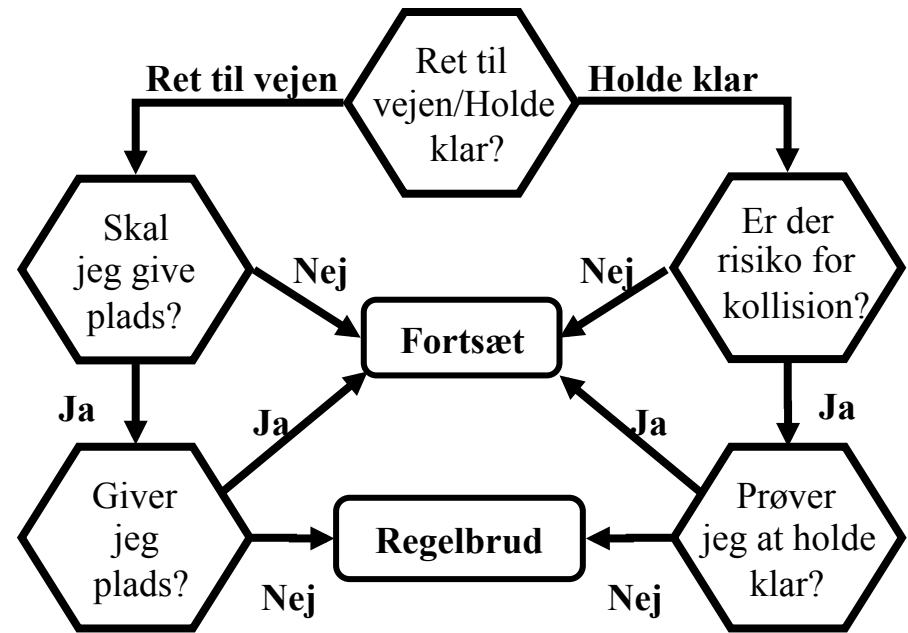


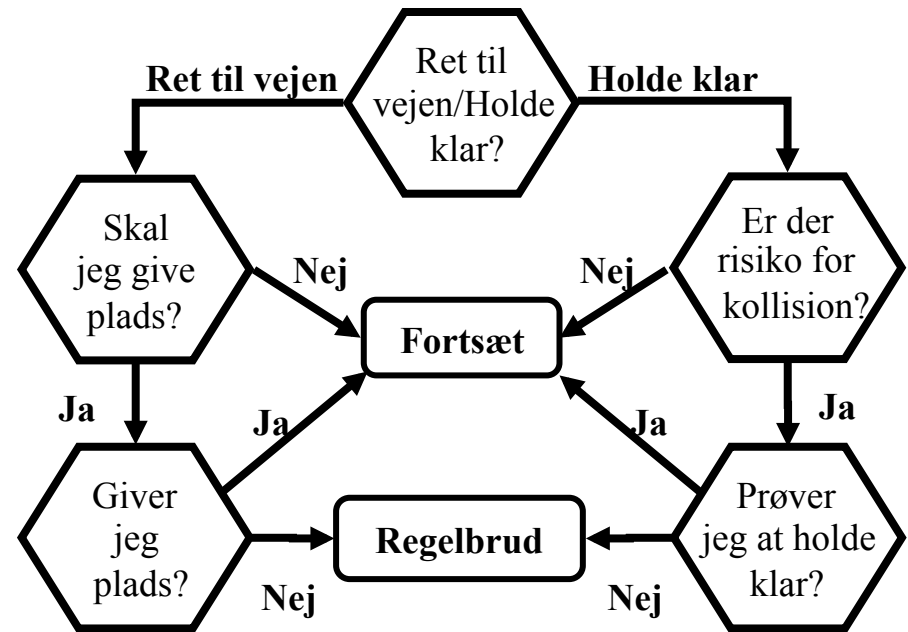
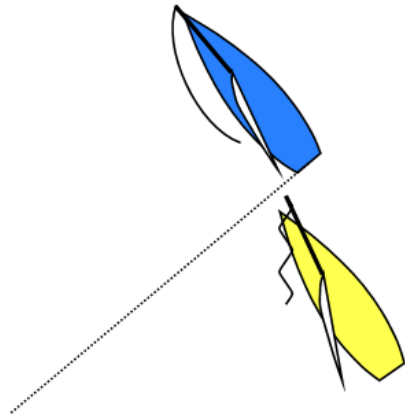


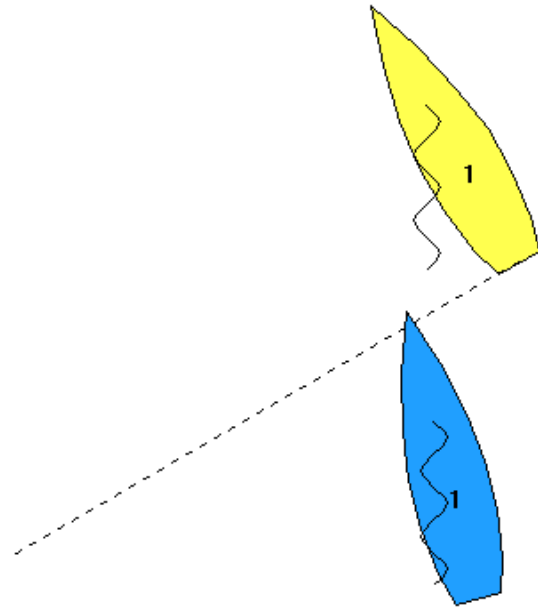
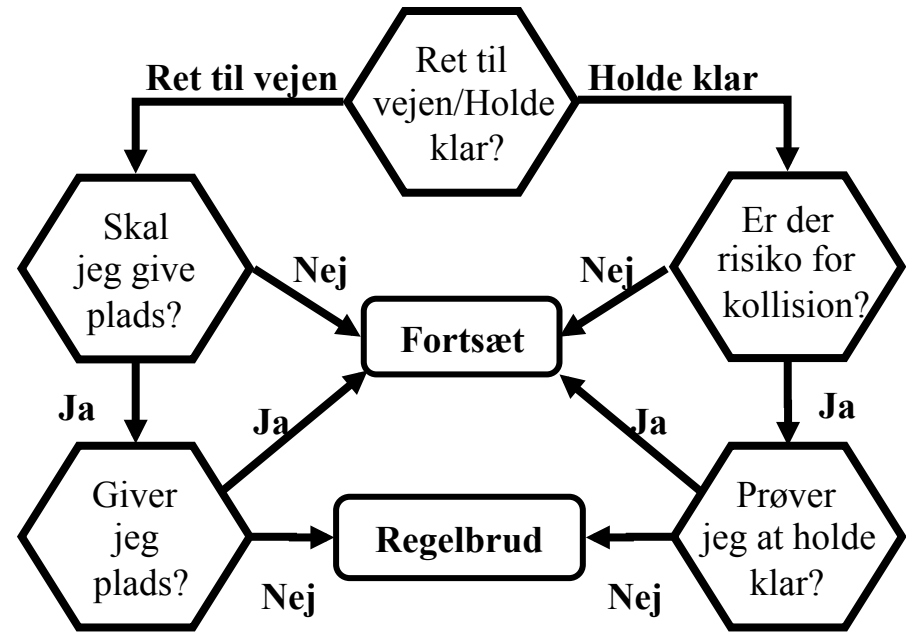
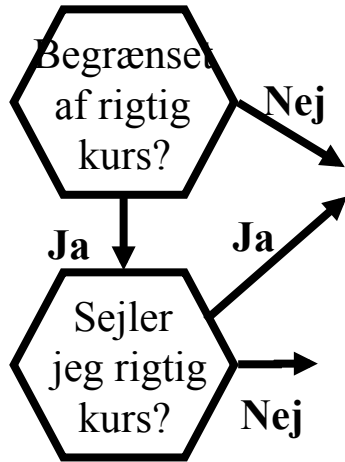


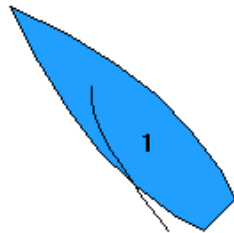
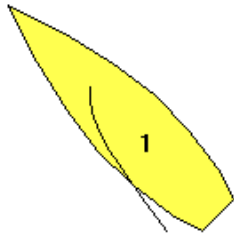
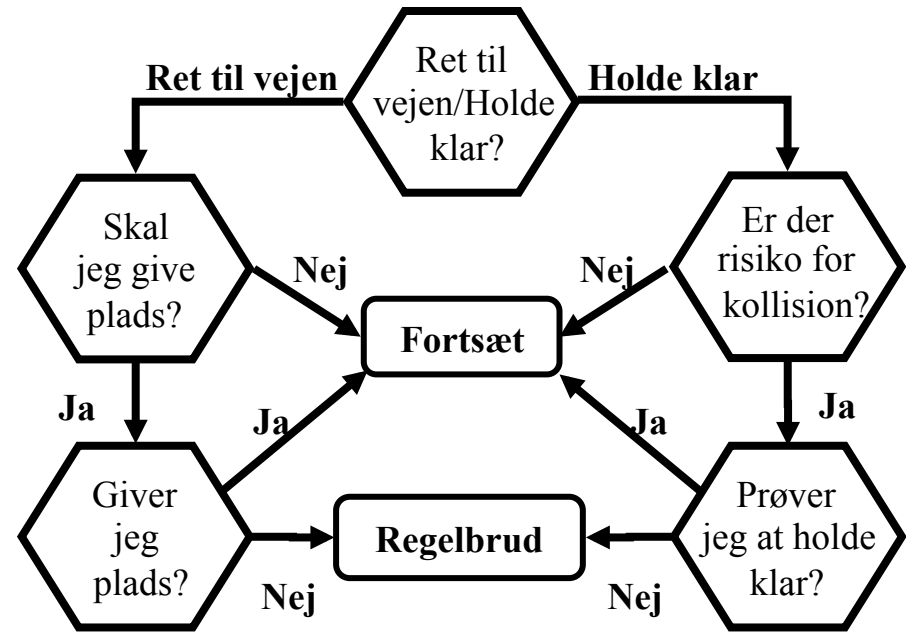
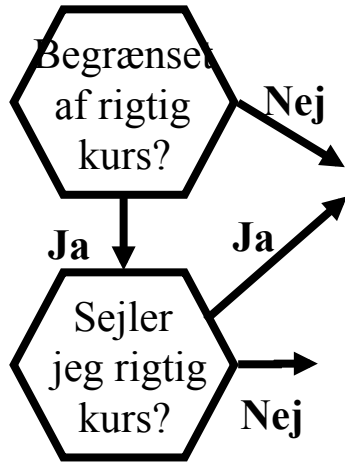


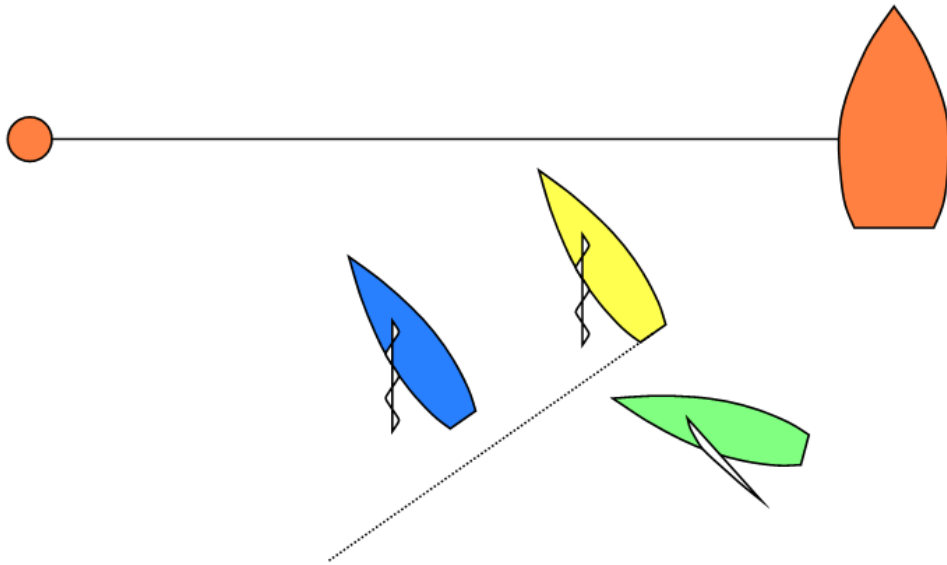
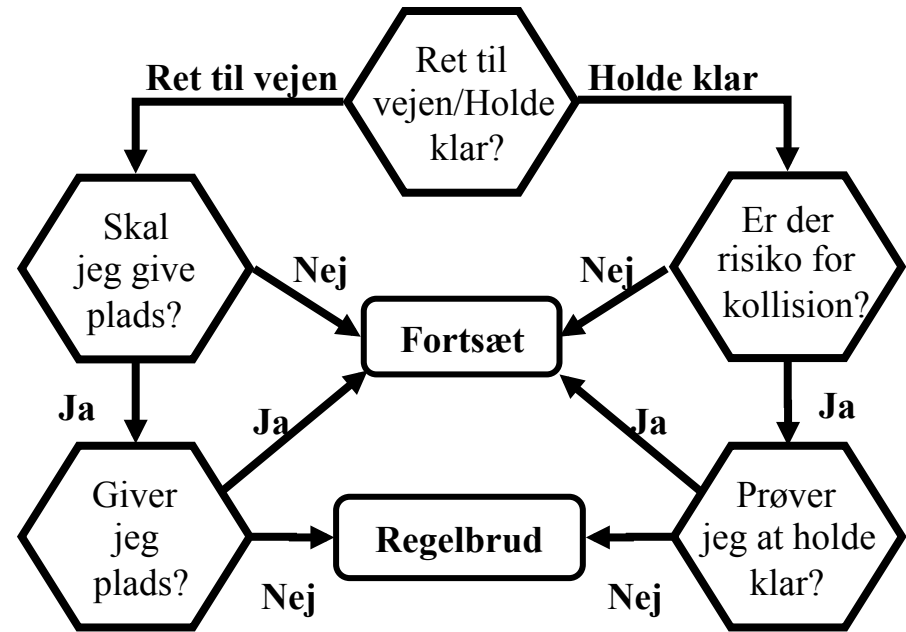


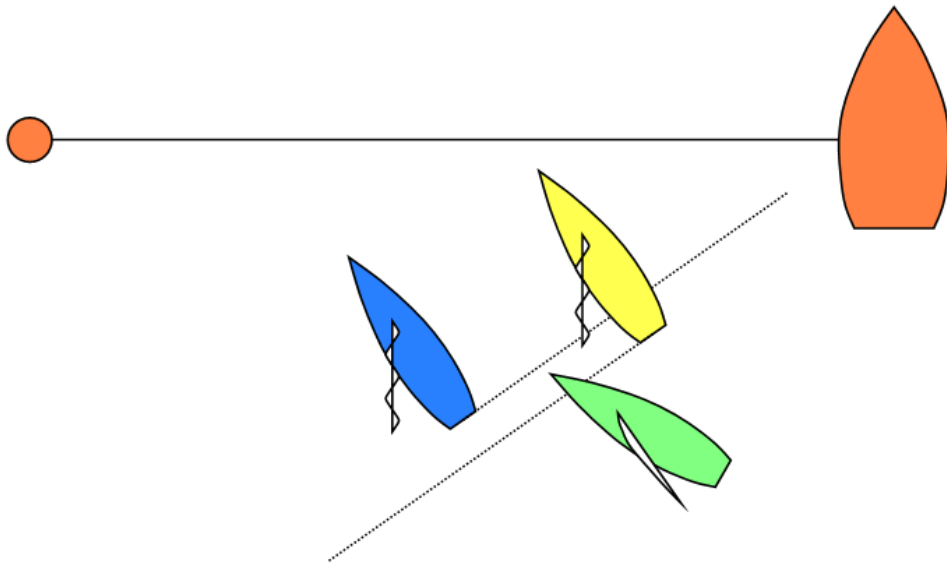
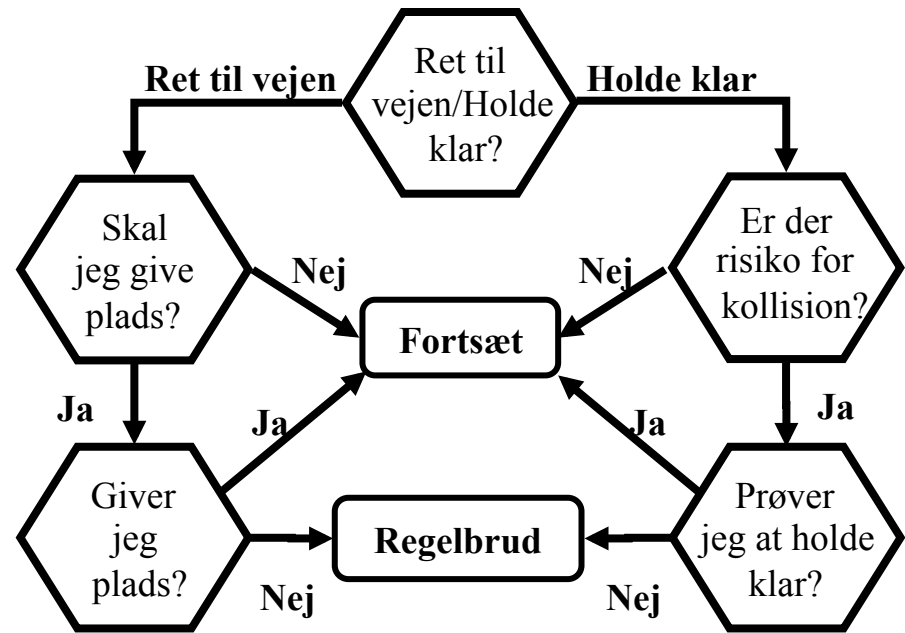


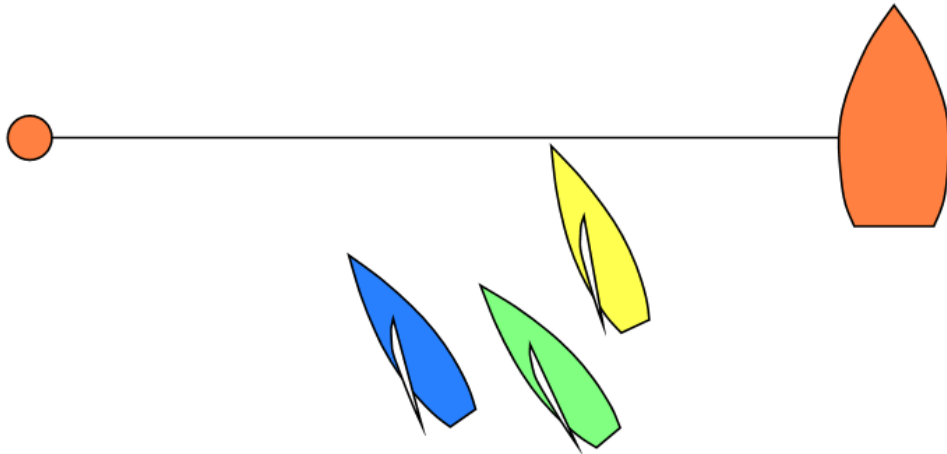
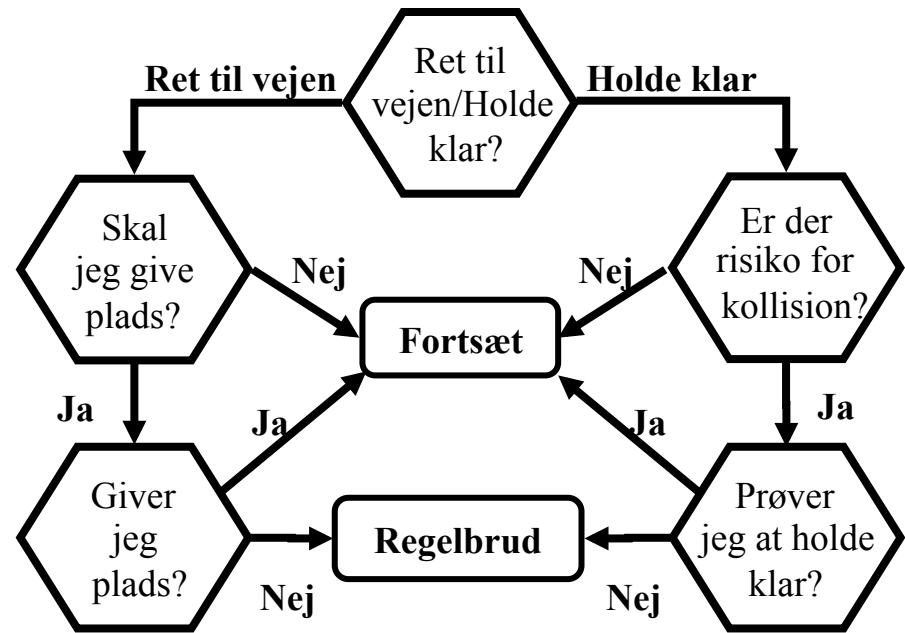


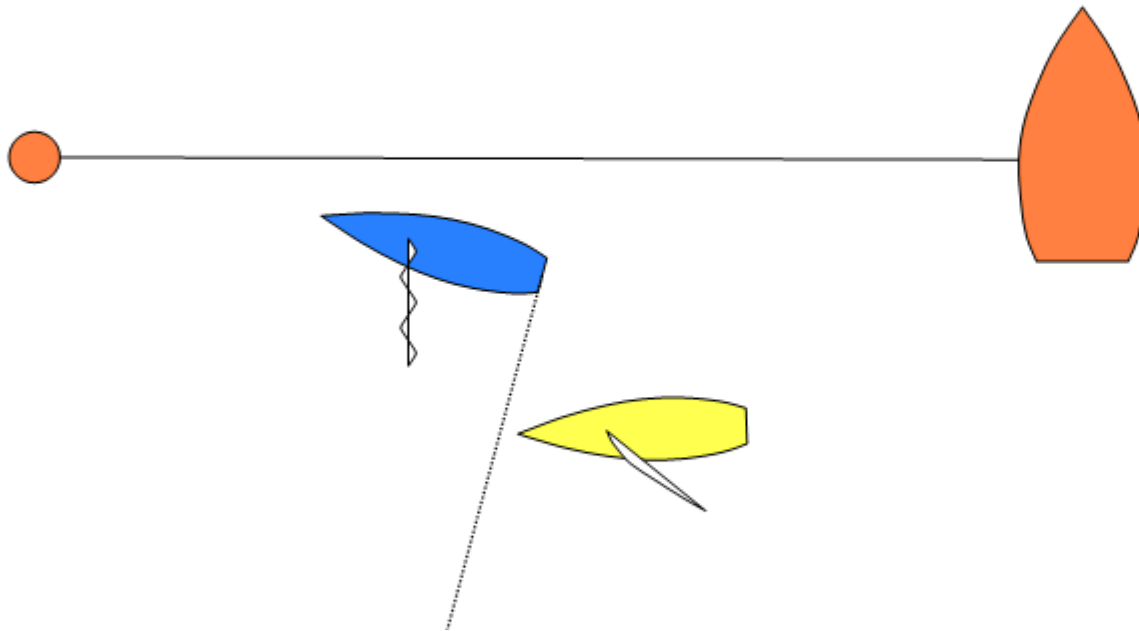
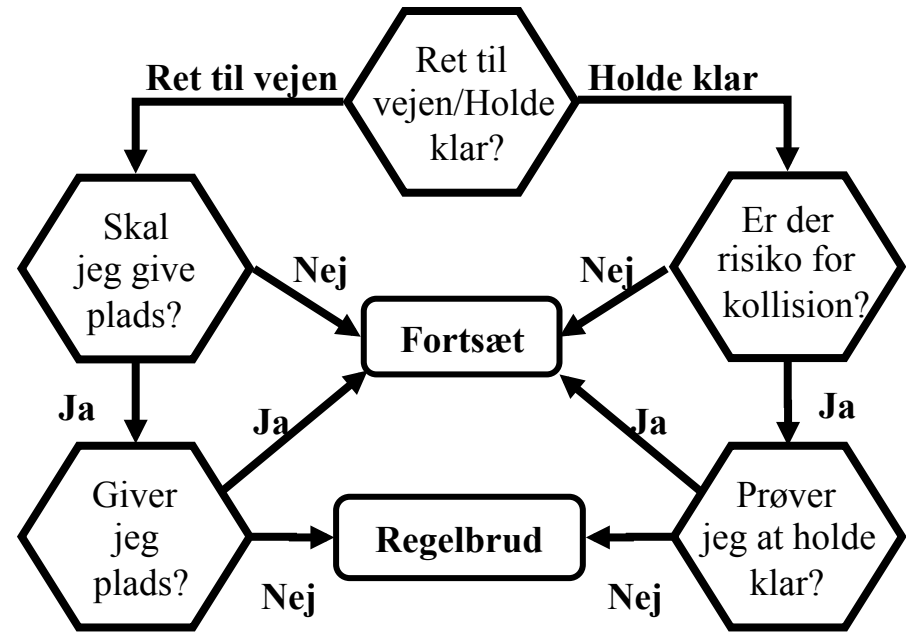


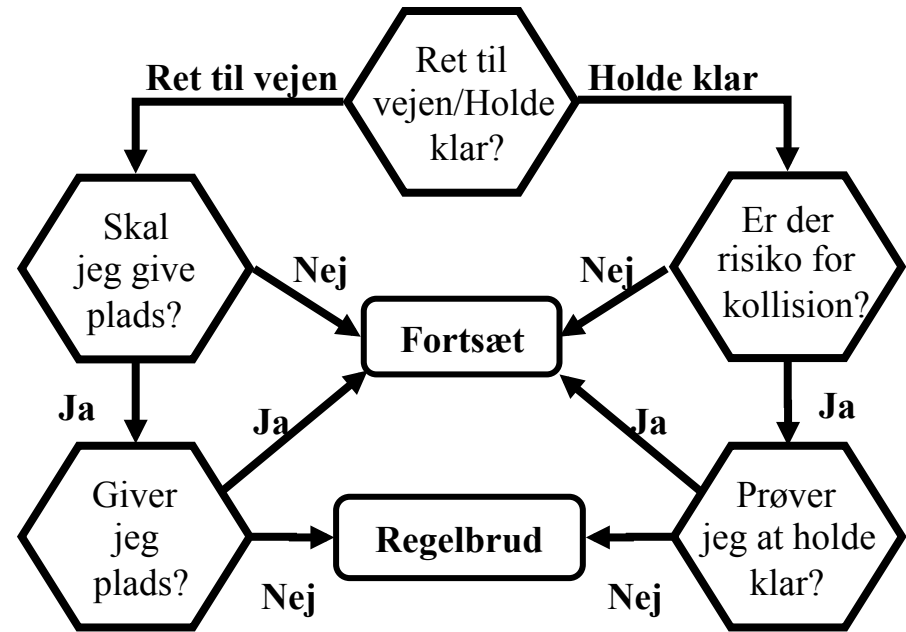




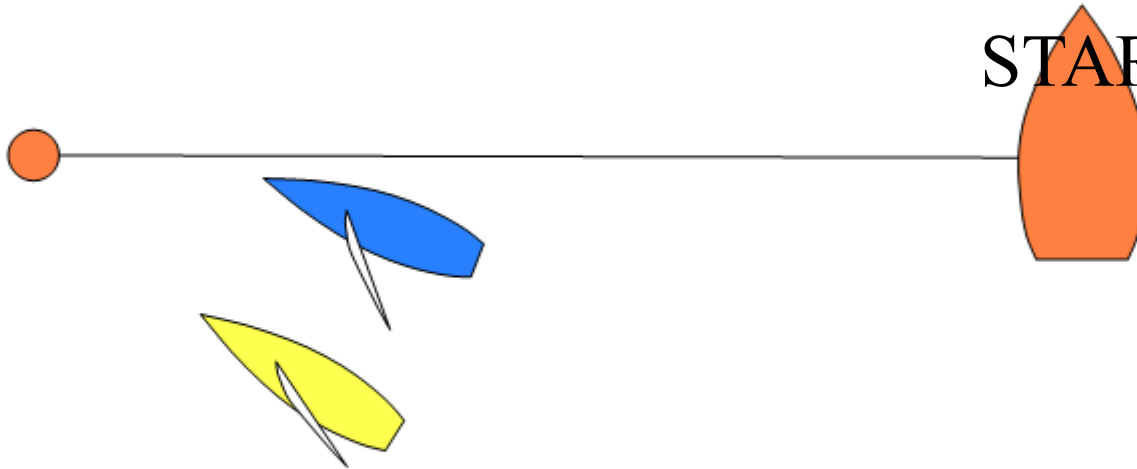


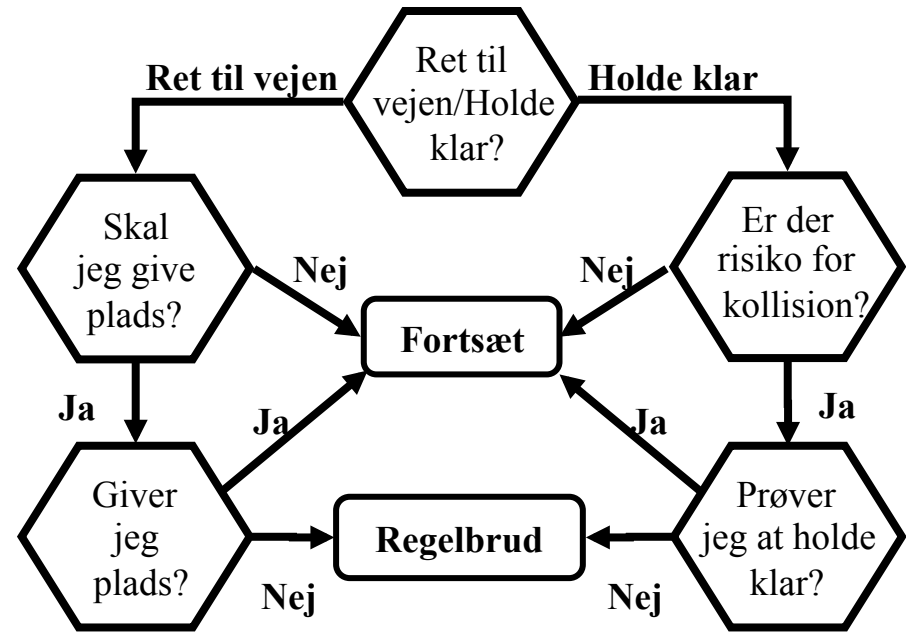
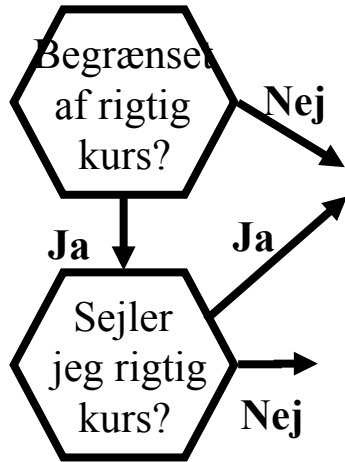


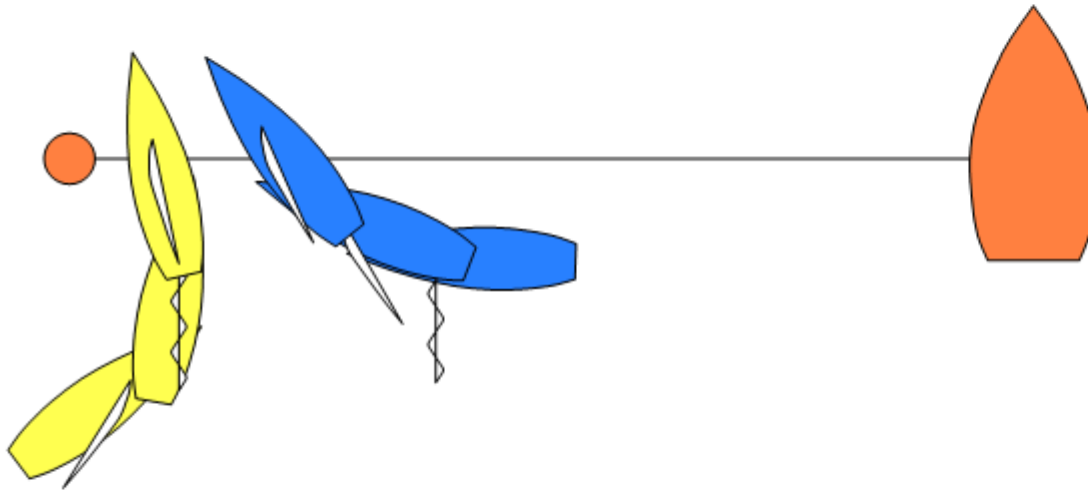
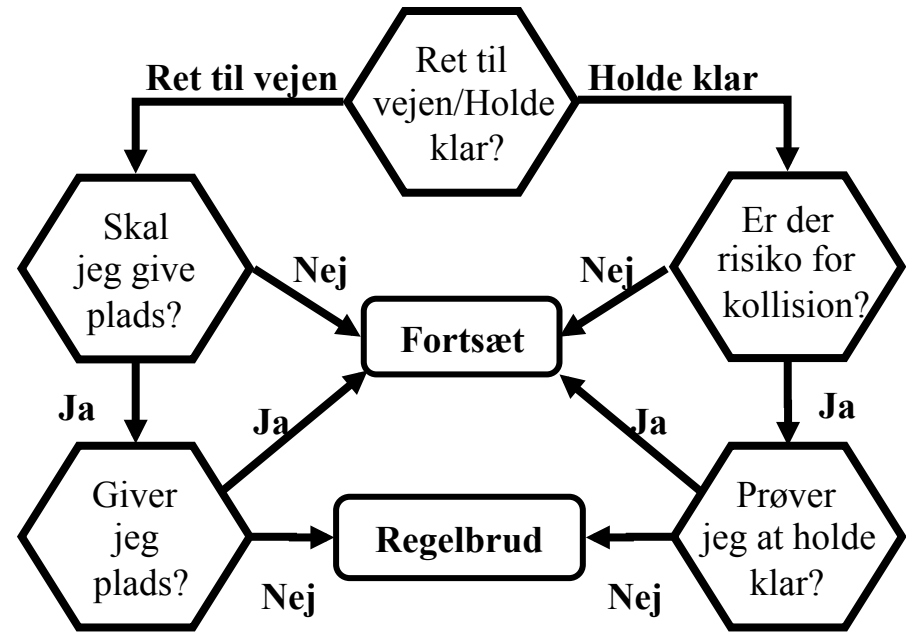
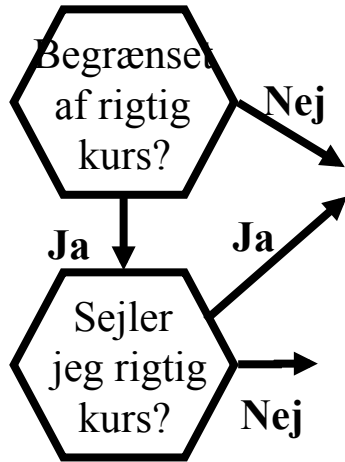




START SIGNAL







Del 2 Afsnit C

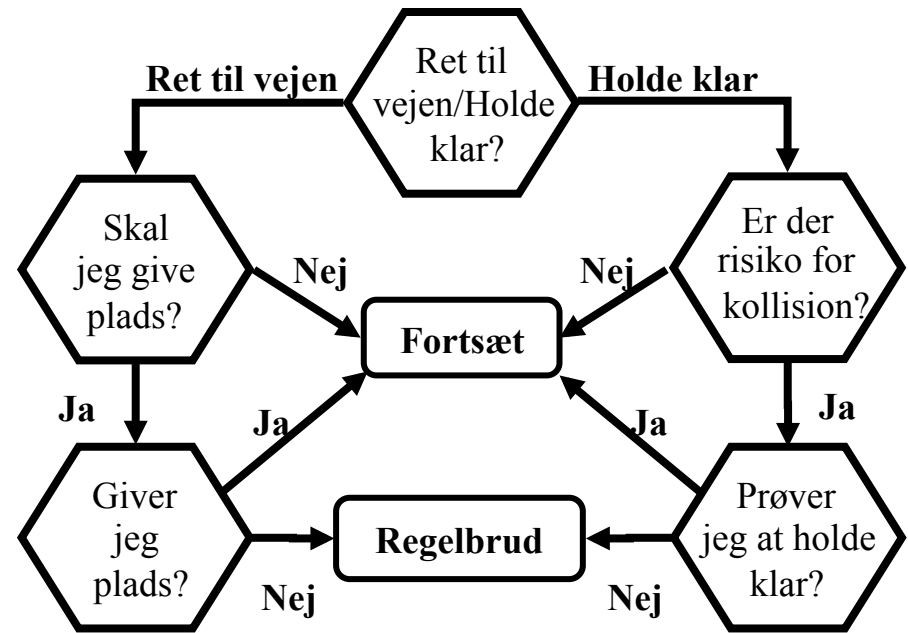
”Ved mærker og hindringer”

Regel 18 MÆRKE-PLADS

**Regel 19 PLADS TIL AT PASSERE EN
HINDRING**

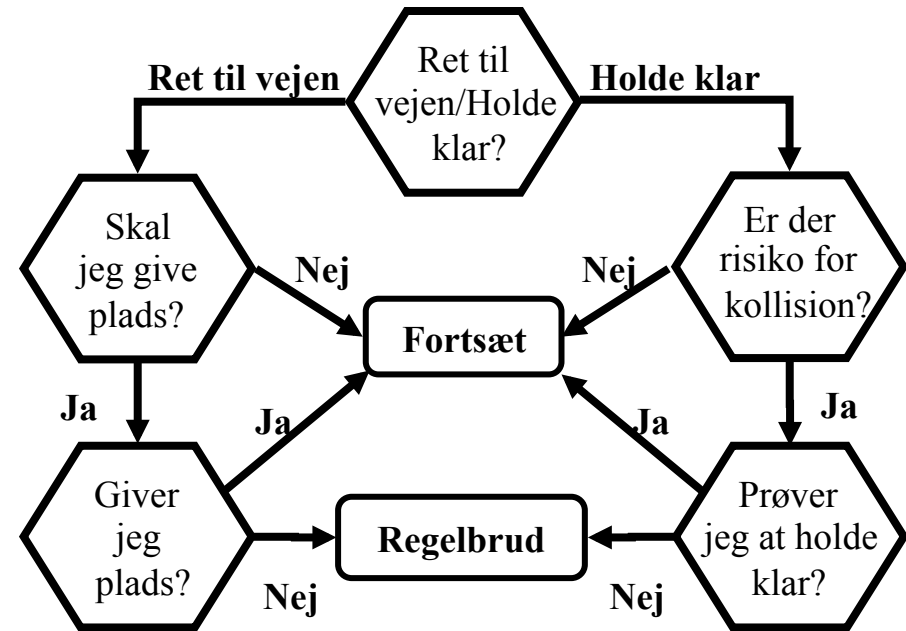
**Regel 20 PLADS TIL AT STAGVENDE VED
EN HINDRING**

Regel 21 FRIFINDELSE

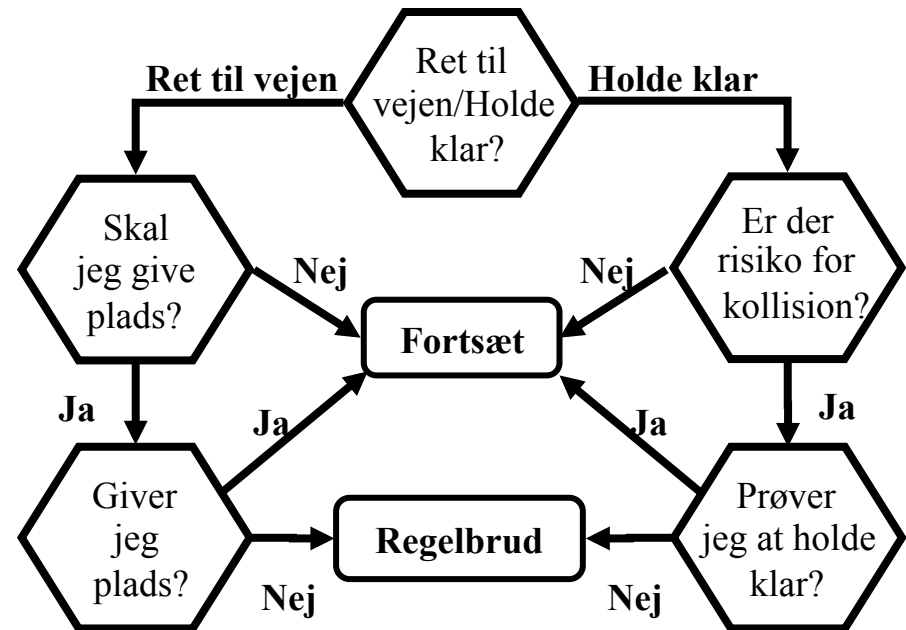


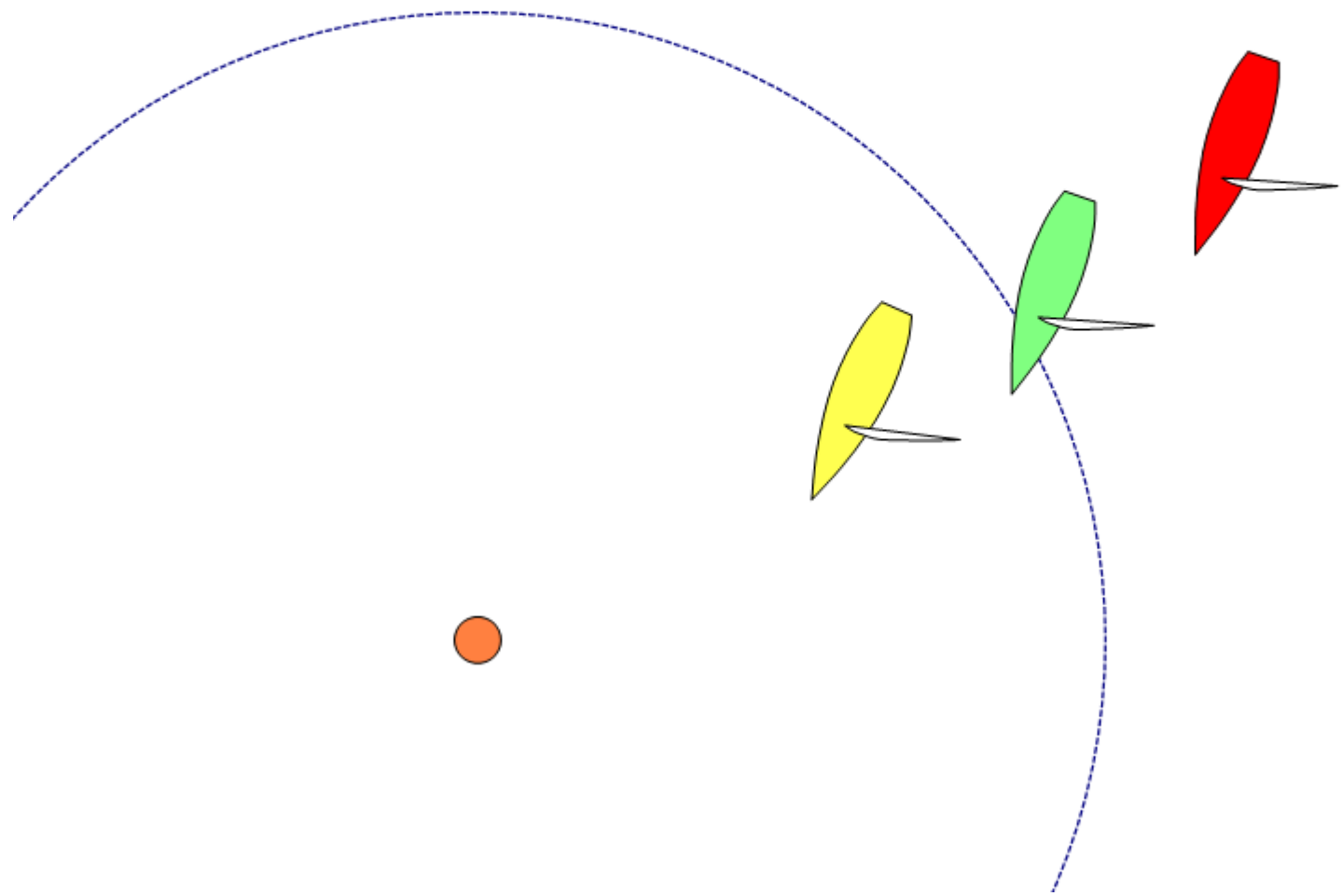
Skal blå foretage en

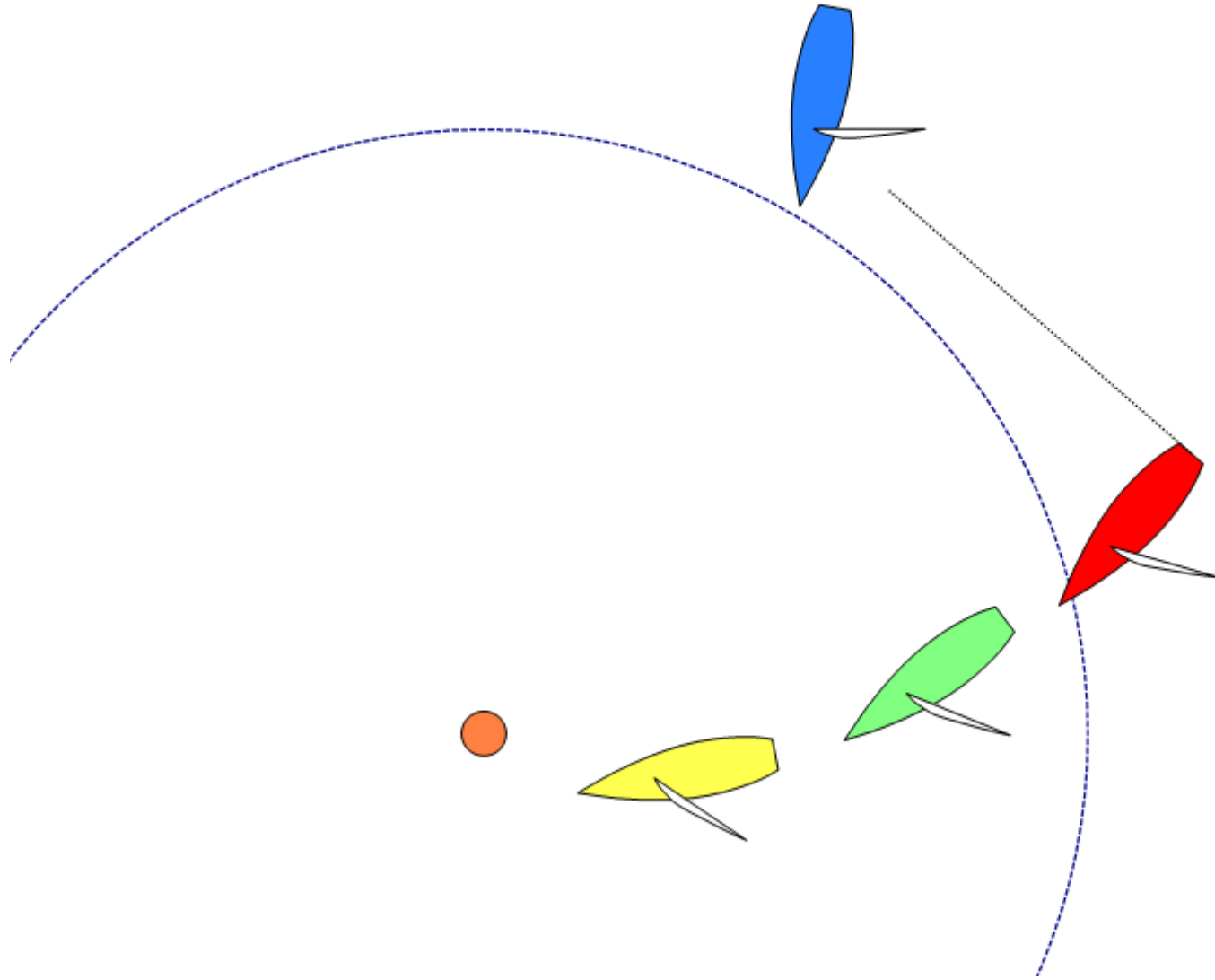
- væsentlig kursændring
- mere end én længde fra gul?

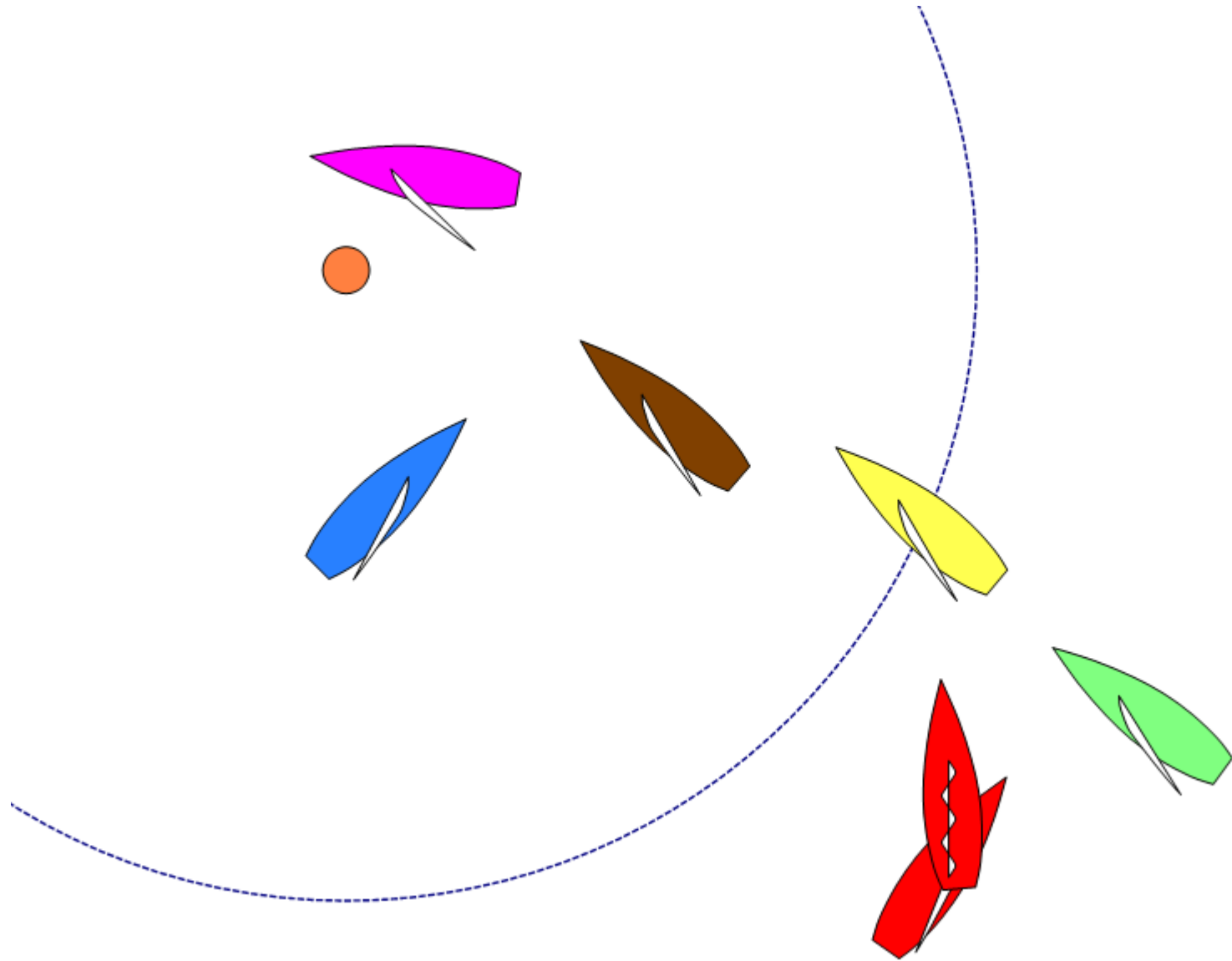


En kapsejlende båd er IKKE en hindring for andre både, MEDMINDRE de skal HOLDE KLAR af den









Regel 18.2 (h)

Hvis der er begrundet tvivl om hvorvidt en båd **opnåede** eller **brød** et ***overlap*** i tide, skal det antages, at den ikke gjorde det.

TSS software registered to Soren Krause

